

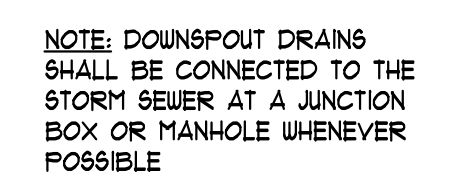
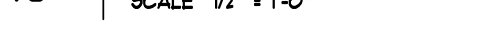
A0.0

Copyright © 2016 TED TROUT ARCHITECT AND ASSOCIATES, LTD. drawings and specifications as instruments of service and shall remain the property of the Architect. They are not to be used on other projects or extensions to this project except by agreement in writing and with appropriate compensation to the Architect.

149 COL. ETHERIDGE BLVD.
HUNTSVILLE, TEXAS 77340

SHEET NUMBER

11/11/2016





CLIENT NAME:

CALIBER INVESTMENT CORP.

P.O. BOX 6153
HUNTSVILLE, TEXAS 77342

PROJECT NAME:

THE WEST HILL
CENTER MALL

PROJECT LOCATION:

149 COL. ETHERIDGE BLVD.
HUNTSVILLE, TEXAS 77340

DATE	ISSUE
10.20.2020	PRELIMINARY
03.05.2021	PERMIT
05.24.2021	PERMIT COMMENTS

DATE 05.24.2021

SCALE NONE

PROJECT NUMBER 2023

DRAWN BY GGF

SHEET TITLE
CODE ANALYSIS
& FIRE PROTECTION DATA

SHEET NUMBER

A0.3

NOT USED

BUILDING CODE DATA

CODES:	
BUILDING CODES:	INTERNATIONAL BUILDING CODE - 2015 CITY OF HUNTSVILLE CODE OF ORDINANCES, CHAPTER 12
GRADING & EXCAVATION:	INTERNATIONAL BUILDING CODE, APPENDIX J-GRADING 2015
AIR CONDITIONING / HEATING:	INTERNATIONAL MECHANICAL CODE 2015 INTERNATIONAL CODE COUNCIL 2015 CITY OF HUNTSVILLE CODE OF ORDINANCES, CHAPTER 12
PLUMBING:	INTERNATIONAL PLUMBING CODE 2015 INTERNATIONAL FUEL GAS CODE 2015 CITY OF HUNTSVILLE CODE OF ORDINANCES, CHAPTER 12
ELECTRICAL:	NATIONAL ELECTRIC CODE 2011 INTERNATIONAL ENERGY CODE 2015 CITY OF HUNTSVILLE CODE OF ORDINANCES, CHAPTER 12, ARTICLE V
FIRE:	INTERNATIONAL FIRE PREVENTION CODE 2015 NATIONAL ELECTRIC CODE 2011 CITY OF HUNTSVILLE CODE OF ORDINANCES, CHAPTER 20

OCCUPANCY: GROUP M - MERCANTILE
CONST. TYPE: GROUP M - TYPE V-B (SPRINKLER)
HEIGHT & AREA: SEE TABLE BELOW

BUILDING TYPE / NAME:	DESCRIPTION / NUMBER	OCCUPANCY / CONSTRUCTION TYPE	ALLOWABLE AREA PER BUILDING	ALLOWABLE STOREYS & HEIGHT	ACTUAL AREA PER BUILDING	ACTUAL STOREYS & HEIGHT	N.F.P.A. 13 SPRINKLER SYSTEM
BLDG. TYPE - I	RETAIL	M / TYPE V-B	36,000 S.F.	2 / 60'-0"	13,366 S.F.	1 / 28'-3"	YES

BUILDING TYPE	ACTUAL AREA PER BUILDING	OCCUPANT LOAD FACTOR	OCCUPANT LOAD TOTAL
TYPE I	13,366 S.F.	120	222

BUILDING ELEMENTS	HOURS REQUIRED	HOURS PROVIDED	UL OR IBC STANDARD USED & DESIGN DETAIL SHOWN ON
EXTERIOR BEARING WALLS	0 HR.	N/A	N/A
EXTERIOR NON-BEARING WALLS	0 HR.	N/A	N/A
INTERIOR BEARING WALLS	0 HR.	N/A	N/A
INTERIOR NON-BEARING WALLS	0 HR.	N/A	N/A
FLOOR CONSTRUCTION	0 HR.	N/A	N/A
ROOF CONSTRUCTION	0 HR.	N/A	N/A
FIRE WALL	0 HR.	N/A	N/A



302 FLOOR OR GROUND SURFACES

302.1 General. Floor and ground surfaces shall be stable, firm, and slip resistant and shall comply with 302.

EXCEPTIONS:

1. Within animal containment areas, floor and ground surfaces shall not be required to be stable, firm, and slip resistant.
2. Areas of sport activity shall not be required to comply with 302.

302.2 Carpet. Carpet or carpet tile shall be securely attached and shall have a firm cushion, pad, or backing or no cushion or pad. Carpet or carpet tile shall have a level loop, textured loop, level cut pile, or level cut/uncut pile texture. Pile height shall be 1/2 inch (13 mm) maximum. Exposed edges of carpet shall be fastened to floor surfaces and shall have trim on the entire length of the exposed edge. Carpet edge trim shall comply with 303.

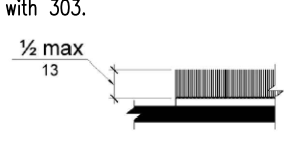


Figure 302.2 Carpet Pile Height

302.3 Openings. Openings in floor or ground surfaces shall not allow passage of a sphere more than 1/2 inch (13 mm) diameter except as allowed in 407.4.3, 409.4.3, 410.4, 410.5.3, and 410.10. Elongated openings shall be placed so that the long dimension is perpendicular to the dominant direction of travel.

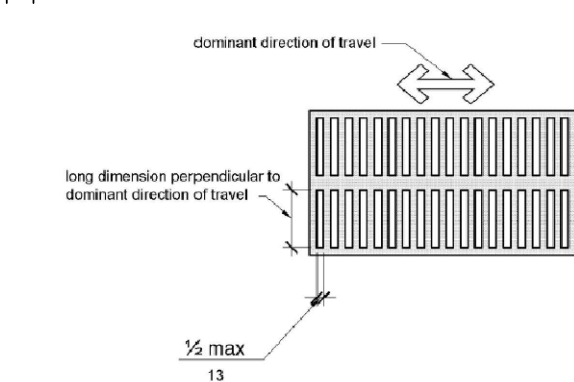


Figure 302.3 Openings in Floor Surfaces

303 CHANGES IN LEVEL

303.1 General. Where changes in level are permitted in floor or ground surfaces, they shall comply with 303.

EXCEPTIONS:

1. Animal containment areas shall not be required to comply with 303.
2. Areas of sport activity shall not be required to comply with 303.

303.2 Vertical. Changes in level of 1/4 inch (6.4 mm) high maximum shall be permitted to be vertical. Figure 303.2 Vertical Change in Level

303.3 Beveled. Changes in level between 1/4 inch (6.4 mm) high minimum and 1/2 inch (13 mm) high maximum shall be beveled with a slope not steeper than 1:2.

303.4 Ramps. Changes in level greater than 1/2 inch (13 mm) high shall be ramped, and shall comply with 405 or 406.



Figure 303.2 Vertical Change in Level

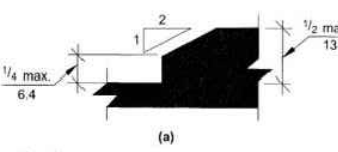


Figure 303.3 Beveled Change in Level

304 TURNING SPACE

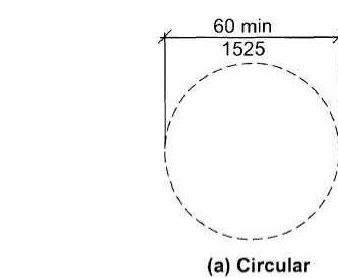
304.1 General. Turning space shall comply with 304.

304.2 Floor or Ground Surfaces. Floor or ground surfaces of a turning space shall comply with 302. Changes in level are not permitted. EXCEPTION: Slopes not steeper than 1:48 shall be permitted.

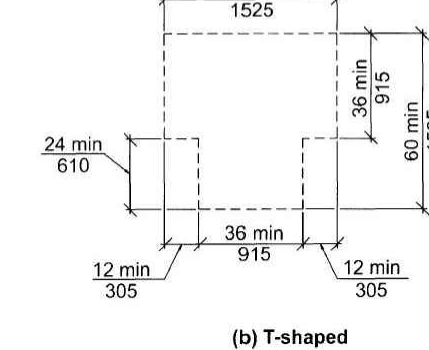
304.3 Size. Turning space shall comply with 304.3.1 or 304.3.2.

304.3.1 Circular Space. The turning space shall be a space of 60 inches (1525 mm) diameter minimum. The space shall be permitted to include knee and toe clearance complying with 306.

304.3.2 T-Shaped Space. The turning space shall be a T-shaped space within a 60 inch (1525 mm) square minimum with arms and base 36 inches (915 mm) wide minimum. Each arm of the T shall be clear of obstructions 12 inches (305 mm) minimum in each direction and the base shall be clear of obstructions 24 inches (610 mm) minimum. The space shall be permitted to include knee and toe clearance complying with 306 only at the end of either the base or one arm.



(a) Circular



(b) T-Shaped

Figure 304.3 Size of Turning Space

304.4 Door Swing. Doors shall be permitted to swing into turning spaces.

305 CLEAR FLOOR SPACE

305.1 General. Clear floor space shall comply with 305.

305.2 Floor or Ground Surfaces. Floor or ground surfaces of a clear floor or ground space shall comply with 302. Changes in level are not permitted. EXCEPTION: Slopes not steeper than 1:48 shall be permitted.

305.3 Size. The clear floor or ground space shall be 30 inches (760 mm) minimum by 48 inches (1220 mm) minimum.

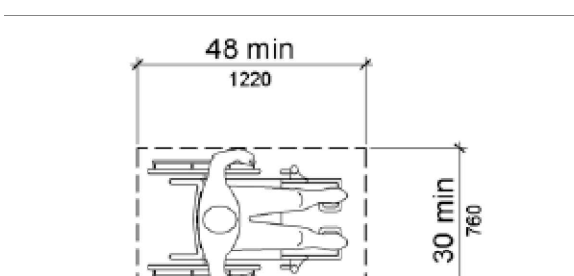


Figure 305.3 Clear Floor Space

305.4 Knee and Toe Clearance. Unless otherwise specified, clear floor or ground space shall be permitted to include knee and toe clearance complying with 306.

305.5 Position. Unless otherwise specified, clear floor or ground space shall be positioned for either forward or parallel approach to an element.

305 CLEAR FLOOR OR GROUND SPACE CONT.

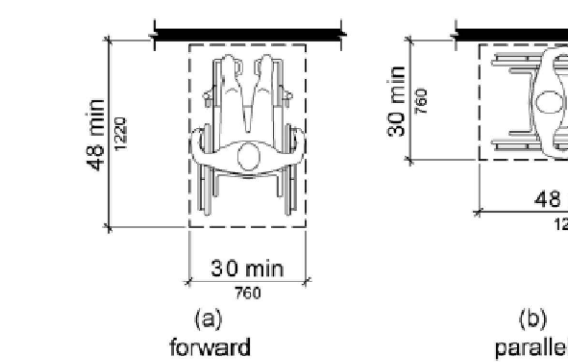


Figure 305.5 Position of Clear Floor

305.6 Approach. One full unobstructed side of the clear floor or ground space shall adjoin an accessible route or adjoin another clear floor or ground space.

305.7 Maneuvering Clearance. Where a clear floor or ground space is located in an alcove or otherwise confined on all or part of three sides, additional maneuvering clearance shall be provided in accordance with 305.7.1 and 305.7.2.

305.7.1 Forward Approach. Alcoves shall be 36 inches (915 mm) wide minimum where the depth exceeds 24 inches (610 mm). Figure 305.7.1 Maneuvering Clearance in an Alcove, Forward Approach

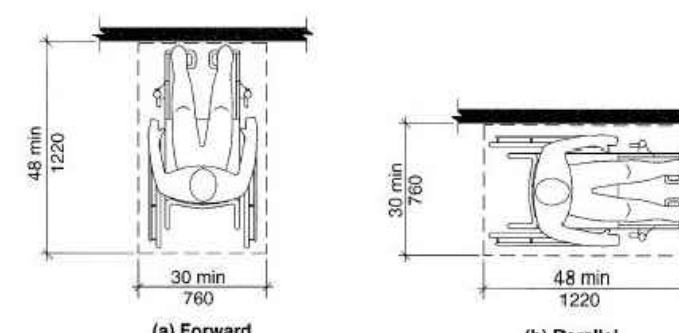


Figure 305.7.2 Maneuvering Clearance in an Alcove, Parallel Approach

305.7.2 Parallel Approach. Alcoves shall be 60 inches (1525 mm) wide minimum where the depth exceeds 15 inches (380 mm). Figure 305.7.2 Maneuvering Clearance in an Alcove, Parallel Approach

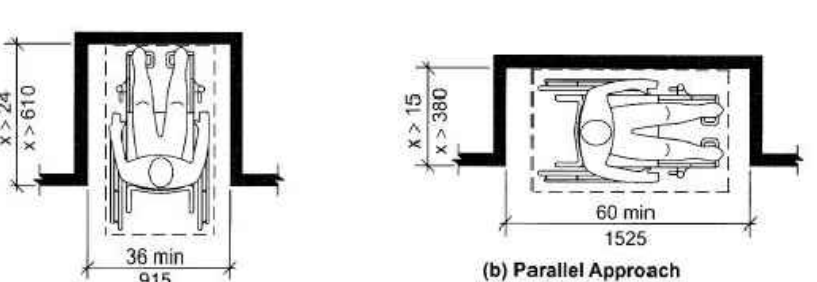


Figure 305.7.2 Maneuvering Clearance in an Alcove, Parallel Approach

306 KNEE AND TOE CLEARANCE

306.1 General. Where space beneath an element is included as part of clear floor or ground space or turning space, the space shall comply with 306. Additional space shall not be prohibited beneath an element but shall not be considered as part of the clear floor or ground space or turning space.

306.2 Toe Clearance. Space under an element between the finish floor or ground and 9 inches (230 mm) above the finish floor or ground shall be considered toe clearance and shall comply with 306.2.

306.2.2 Maximum Depth. Toe clearance shall extend 25 inches (635 mm) maximum under an element.

306.2.3 Minimum Required Depth. Where toe clearance is required at an element as part of a clear floor space, the toe clearance shall extend 17 inches (430 mm) minimum under the element.

306.2.4 Additional Clearance. Space extending greater than 6 inches (150 mm) beyond the available knee clearance at 9 inches (230 mm) above the finish floor or ground shall not be considered toe clearance.

306.2.5 Width. Toe clearance shall be 30 inches (760 mm) wide minimum. Figure 306.2 Toe Clearance

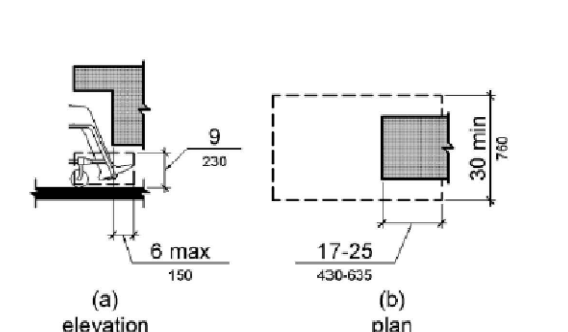


Figure 306.2 Toe Clearance

306.3 Knee Clearance. 306.3.1 General. Space under an element between 9 inches (230 mm) and 27 inches (685 mm) above the finish floor or ground shall be considered knee clearance and shall comply with 306.3. 306.3.2 Maximum Depth. Knee clearance shall extend 25 inches (635 mm) maximum under an element at 9 inches (230 mm) above the finish floor or ground. 306.3.3 Minimum Required Depth. Where knee clearance is required under an element as part of a clear floor space, the knee clearance shall be 11 inches (280 mm) deep minimum at 9 inches (230 mm) above the finish floor or ground, and 8 inches (205 mm) deep minimum at 27 inches (685 mm) above the finish floor or ground. 306.3.4 Clearance Reduction. Between 9 inches (230 mm) and 27 inches (685 mm) above the finish floor or ground, the knee clearance shall be permitted to reduce at a rate of 1 inch (25 mm) in depth for each 6 inches (150 mm) in height. 306.3.5 Width. Knee clearance shall be 30 inches (760 mm) wide minimum.

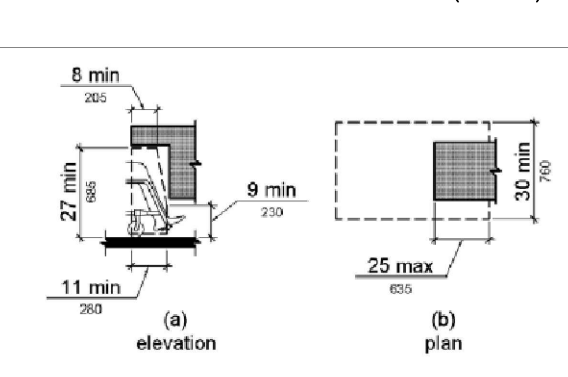


Figure 306.3 Knee Clearance

301 PROTRUDING OBJECTS

307.1 General. Protruding objects shall comply with 307. 307.2 Protrusion Limits. Objects with leading edges more than 27 inches (685 mm) and not more than 80 inches (2030 mm) above the finish floor or ground shall protrude 4 inches (100 mm) maximum horizontally into the circulation path. EXCEPTION: Handrails shall be permitted to protrude 4 1/2 inches (115 mm) maximum.

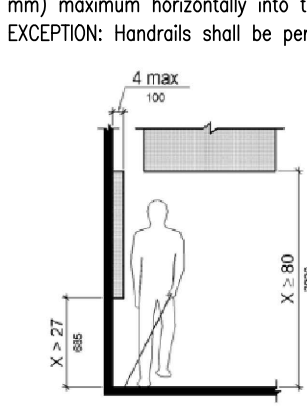


Figure 307.2 Limits of Protruding Objects

307.3 Post-Mounted Objects. Free-standing objects mounted on posts or pylons shall overhang circulation paths 12 inches (305 mm) maximum when located 27 inches (685 mm) minimum and 80 inches (2030 mm) maximum above the finish floor or ground. Where a sign or other obstruction is mounted between posts or pylons and the clear distance between the posts or pylons is greater than 12 inches (305 mm), the lowest edge of such sign or obstruction shall be 27 inches (685 mm) maximum or 80 inches (2030 mm) minimum above the finish floor or ground. EXCEPTION: The sloping portions of handrails serving stairs and ramps shall not be required to comply with 307.3.

307.4 Operation. Operable parts shall be operable with one hand and shall not require tight grasping, pinching, or twisting of the wrist. The force required to activate operable parts shall be 5 pounds (22.2 N) maximum. EXCEPTION: Gas pump nozzles shall not be required to provide operable parts that have an activating force of 5 pounds (22.2 N) maximum.

301 PROTRUDING OBJECTS CONT.

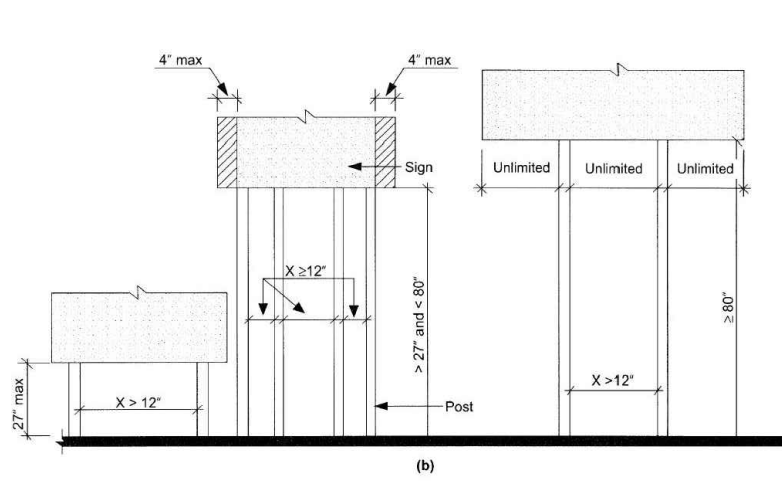


Figure 307.3 Post-Mounted Protruding Objects

307.4 Vertical Clearance. Vertical clearance shall be 80 inches (2030 mm) high minimum. Guardrails or other barriers shall be provided where the vertical clearance is less than 80 inches (2030 mm) high. The leading edge of such guardrail or barrier shall be located 27 inches (685 mm) maximum above the finish floor or ground. EXCEPTION: Door closers and door stops shall be permitted to be 78 inches (1980 mm) minimum above the finish floor or ground.

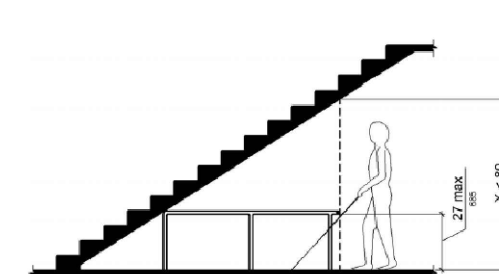


Figure 307.4 Vertical Clearance

307.5 Required Clear Width. Protruding objects shall not reduce the clear width required for accessible routes.

308 REACH RANGES

308.1 General. Reach ranges shall comply with Section 308

308.2 Forward Reach.

308.2.1 Unobstructed. Where a forward reach is unobstructed, the high forward reach shall be 48 inches (1220 mm) maximum and the low forward reach shall be 15 inches (380 mm) minimum above the finish floor or ground.

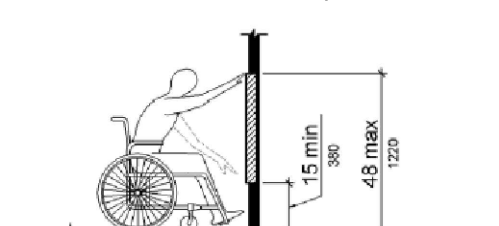


Figure 308.2.1 Unobstructed Forward Reach

308.2.2 Obstructed High Reach.

Where a high forward reach is over an obstruction, the clear floor space shall extend beneath the element for a distance not less than the required reach depth over the obstruction. The high forward reach shall be 48 inches (1220 mm) maximum where the reach depth is 20 inches (510 mm) maximum. Where the reach depth exceeds 20 inches (510 mm), the high forward reach shall be 44 inches (1120 mm) maximum and the reach depth shall be 25 inches (635 mm) maximum.

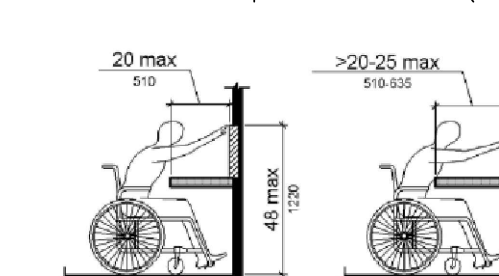


Figure 308.2.2 Obstructed High Forward Reach

308.3 Side Reach.

308.3.1 Unobstructed. Where a clear floor space complying with section 305 allows a parallel approach to an element and the edge of the clear floor space is 10 inches (255 mm) maximum from the element, the high side reach shall be 48 inches (1220 mm) maximum and the low side reach shall be 15 inches (380 mm) minimum above the floor. EXCEPTION: existing elements that are not altered shall be permitted at 54 inches (1370 mm) maximum above the floor.

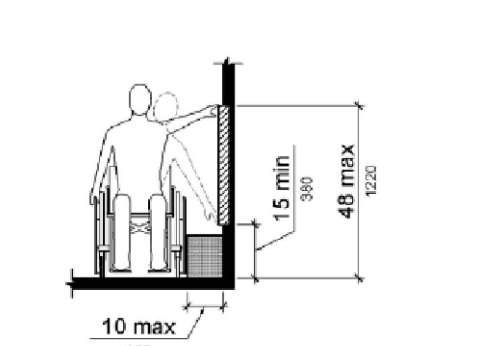


Figure 308.3.1 Unobstructed Side Reach

308.3.2 Obstructed High Reach. Where a clear floor space complying with Section 305 allows a parallel approach to an element and the high side reach is over an obstruction, the height of the obstruction shall be 34 inches (865 mm) maximum and the depth of the obstruction shall be 24 inches (610 mm) maximum. The high side reach shall be 48 inches (1220 mm) maximum for a reach depth of 10 inches (255 mm) maximum. Where the reach depth exceeds 10 inches (255 mm), the high side reach shall be 46 inches (1170 mm) maximum for a reach depth of 24 inches (610 mm) maximum.

EXCEPTION: The top of washing machines and clothes dryers shall be permitted to be 36 inches (915 mm) maximum above the finish floor.

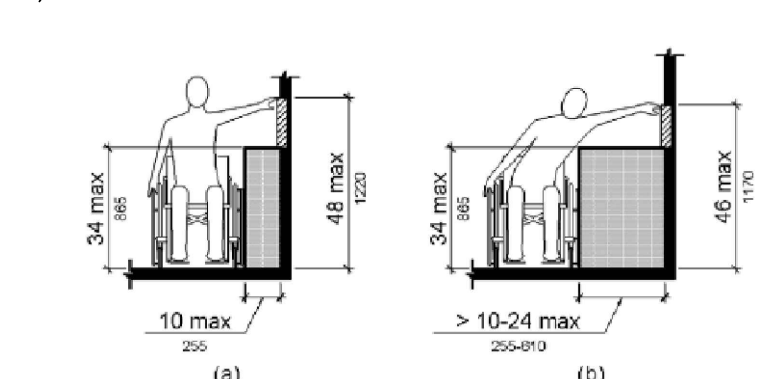


Figure 308.3.2 Obstructed High Side Reach

309 OPERABLE PARTS

309.1 General. Operable parts shall comply with 309.

309.2 Clear Floor Space. A clear floor or ground space complying with 305 shall be provided.

309.3 Height. Operable parts shall be placed within one or more of the reach ranges specified in 308.

309.4 Operation. Operable parts shall be operable with one hand and shall not require tight grasping, pinching, or twisting of the wrist. The force required to activate operable parts shall be 5 pounds (22.2 N) maximum. EXCEPTION: Gas pump nozzles shall not be required to provide operable parts that have an activating force of 5 pounds (22.2 N) maximum.

402 ACCESSIBLE ROUTES

402.1 General. Accessible routes shall comply with 402.

402.2 Components. Accessible routes shall consist of one or more of the following components: Walking surfaces with a slope not steeper than 1:20; doors and doorways, ramps, curb ramps excluding the flared sides, elevators, and platform lifts. All components of an accessible route shall comply with the applicable portions of this standard.

402.3 Revolving Doors, Revolving Gates, and Turnstiles. Revolving doors, revolving gates, and turnstiles shall not be part of an accessible route.

403 WALKING SURFACES

403.1 Walking surfaces that are a part of an accessible route shall comply with Section 403.

403.2 Floor Surface. Floor surfaces shall comply with 302.

403.3 Slope. The running slope of walking surfaces shall not be steeper than 1:20. The cross slope of walking surfaces shall not be steeper than 1:48.

403.4 Changes in Level. Changes in level shall comply with 303.

403.5 Clearances. Walking surfaces shall provide clearances complying with 403.5.

EXCEPTION: Within employee work areas, clearances on common use circulation paths shall be permitted to be decreased by work area equipment provided that the decrease is essential to the function of the work being performed.

403.5.1 Clear Width. The clear width of walking surfaces shall be 36 inches (915 mm) minimum. EXCEPTION: The clear width shall be permitted to be reduced to 32 inches (815 mm) minimum for a length of 24 inches (610 mm) maximum provided that reduced width segments are separated by segments that are 48 inches (1220 mm) long minimum and 36 inches (915 mm) wide minimum.

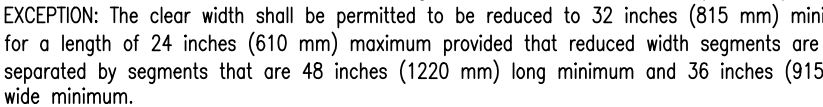


Figure 403.5.1 Clear Width of an Accessible Route

403.5.2 Clear Width at a 180 Degree Turn. Where the accessible route makes a 180 degree turn around an object that is less than 48 inches (1220 mm) wide, clear width shall be 42 inches (1065 mm) minimum approaching the turn, 48 inches (1220 mm) minimum at the turn and 42 inches (1065 mm) minimum leaving the turn.

EXCEPTION: Where the clear width at the turn is 60 inches (1525 mm) minimum compliance with 403.5.2 shall not be required. Figure 403.5.2 Clear Width at Turn

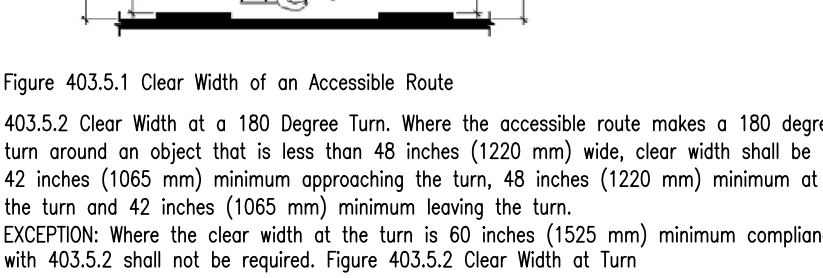


Figure 403.5.2 Clear Width at Turn

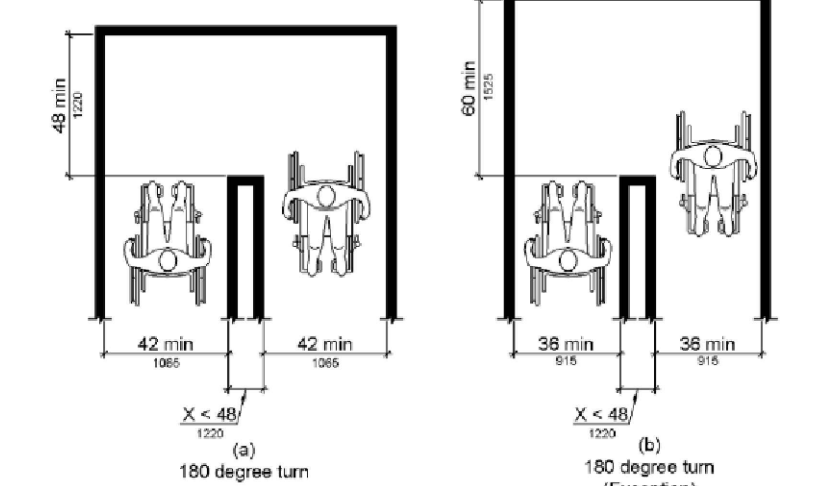


Figure 403.5.3 Passing Spaces

403.5.3 Passing Spaces. An accessible route with a clear width less than 60 inches (1525 mm) shall provide passing spaces at intervals of 200 feet (61 m) maximum. Passing spaces shall be either: a space 60 inches (1525 mm) minimum by 60 inches (1525 mm) minimum; or, an intersection of two walking surfaces providing a T-shaped space complying with 304.3.2 where the base and arms of the T-shaped space extend 48 inches (1220 mm) minimum beyond the intersection.

403.6 Handrails. Where handrails are provided along walking surfaces with running slopes not steeper than 1:20 they shall comply with 505.

Advisory 403.6 Handrails. Handrails provided in elevator cabs and platform lifts are not required to comply with the requirements for handrails on walking surfaces.

404 DOORS, DOORWAYS AND GATES

404.1 General. Doors and doorways that are part of an accessible route shall comply with 404.

404.2 Manual Doors. Manual doors and doorways and manual gates, including ticket gates, shall comply with 404.2.

EXCEPTION: Doors, doorways, and gates designed to be operated only by security personnel shall not be required to comply with 404.2.7, 404.2.7 and 404.2.8.

404.2.1 Double-Leaf Doors and Gates. At least one of the active leaves of doorways with two leaves shall comply with 404.2.2 and 404.2.3.

404.2.2 Clear Width. Door openings shall provide a clear width of 32 inches (815 mm) minimum. Clear openings of doorways with swinging doors shall be measured between the face of the door and the stop, with the door open 90 degrees. Openings more than 24 inches (610 mm) deep shall provide a clear opening of 36 inches (915 mm) minimum. There shall be no projections into the required clear opening wider than 34 inches (865 mm) above the finish floor or ground. Projections into the clear opening width between 34 inches (865 mm) and 80 inches (2030 mm) above the finish floor or ground shall not exceed 4 inches (100 mm).

EXCEPTIONS:

1. Door closers and door stops shall be permitted to be 78 inches (1980 mm) minimum above the finish floor or ground.
2. In alterations, a projection of 5/8 inch (16 mm) maximum into the required clear width shall be permitted for the latch side stop.

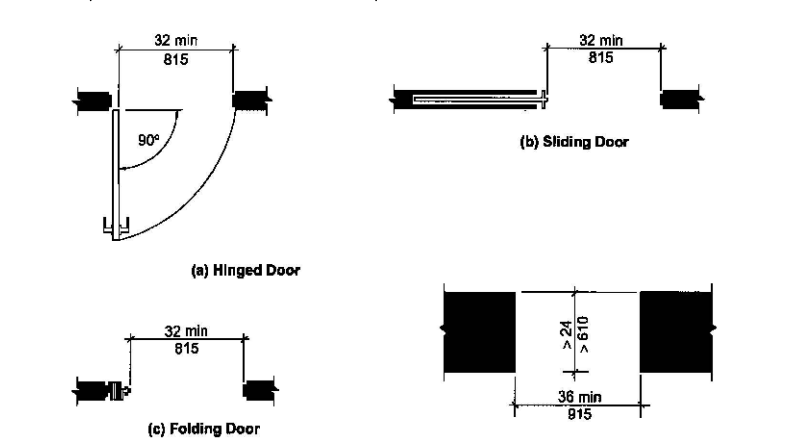


Figure 404.2.2 Clear Width of Doorways

404.2.3 Maneuvering Clearances. Minimum maneuvering clearances at doors shall comply with Section 404.2.3 and shall include the full clear opening width of the doorway. Required door maneuvering clearances shall not include knee and toe clearances.

404.2.3.1 Floor Surface. Floor surface within the maneuvering clearances shall have a slope not steeper than 1:48 and shall comply with Section 302.

404.2.3.2 Swinging Doors. Swinging doors shall have maneuvering clearances complying with Table 404.2.3.3.

404.2.3.3 Sliding and Folding Doors. Sliding doors and folding doors shall have maneuvering clearances complying with Table 404.2.3.3.

Table 404.2.3.3 Maneuvering Clearances at Manual Swing Doors and Gates

Approach Direction	Type of Use	Minimum Maneuvering Clearance	
		Door or Gate Side	Perpendicular to Doorway
From Front	Pull	60 inches (1525mm)	18 inches (455mm)
From Front	Push	48 inches (1220mm)	0 inches (0mm) ¹
From Hinge Side	Pull	60 inches (1525mm)	36 inches (915mm)
From Hinge Side	Pull	54 inches (1370mm)	42 inches (1065mm)
From Hinge Side	Push	42 inches (1065mm) ²	22 inches (560mm) ³
From Hinge Side	Pull	48 inches (1220mm) ⁴	24 inches (610mm)
From Hinge Side	Push	42 inches (1065mm) ⁴	24 inches (610mm)

1. Add 12 inches (305 mm) if closer and latch are provided.
2. Add 6 inches (150 mm) if closer and latch are provided.
3. Beyond hinge side.
4. Add 6 inches (150 mm) if closer is provided.

Table 404.2.3.3 Maneuvering Clearances at Sliding and Folding Doors

Approach Direction	Minimum Maneuvering Clearance	
	Perpendicular to Doorway	Parallel to Doorway (beyond latch side unless noted)
From Front	48 inches (1220mm)	0 inches (0mm)
From Nonlatch Side	42 inches (1065mm)	22 inches (560 mm) ¹
From Latch Side	42 inches (1065mm)	24 inches (610mm)

1. Beyond pocket or hinge side

404 DOORS, DOORWAYS AND GATES CONT.

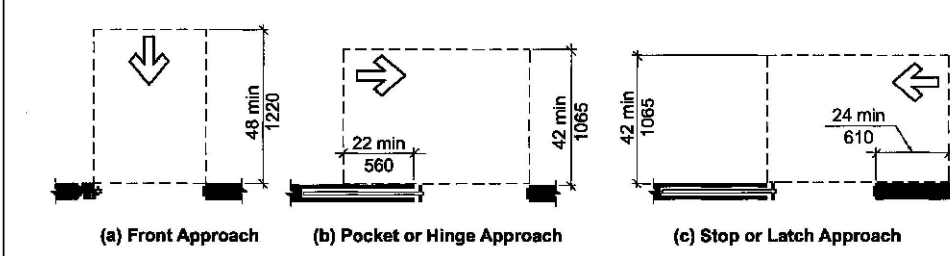


Figure 404.2.3.3 Maneuvering Clearances at Sliding and Folding Doors



Figure 404.2.3.3 Maneuvering Clearances at Sliding and Folding Doors



Figure 404.2.3.3 Maneuvering Clearances at Sliding and Folding Doors



Figure 404.2.3.3 Maneuvering Clearances at Sliding and Folding Doors



Figure 404.2.3.3 Maneuvering Clearances at Sliding and Folding Doors



Figure 404.2.3.3 Maneuvering Clearances at Sliding and Folding Doors



Figure 404.2.3.3 Maneuvering Clearances at Sliding and Folding Doors



Figure 404.2.3.3 Maneuvering Clearances at Sliding and Folding Doors



Figure 404.2.3.3 Maneuvering Clearances at Sliding and Folding Doors



Figure 404.2.3.3 Maneuvering Clearances at Sliding and Folding Doors



Figure 404.2.3.3 Maneuvering Clearances at Sliding and Folding Doors



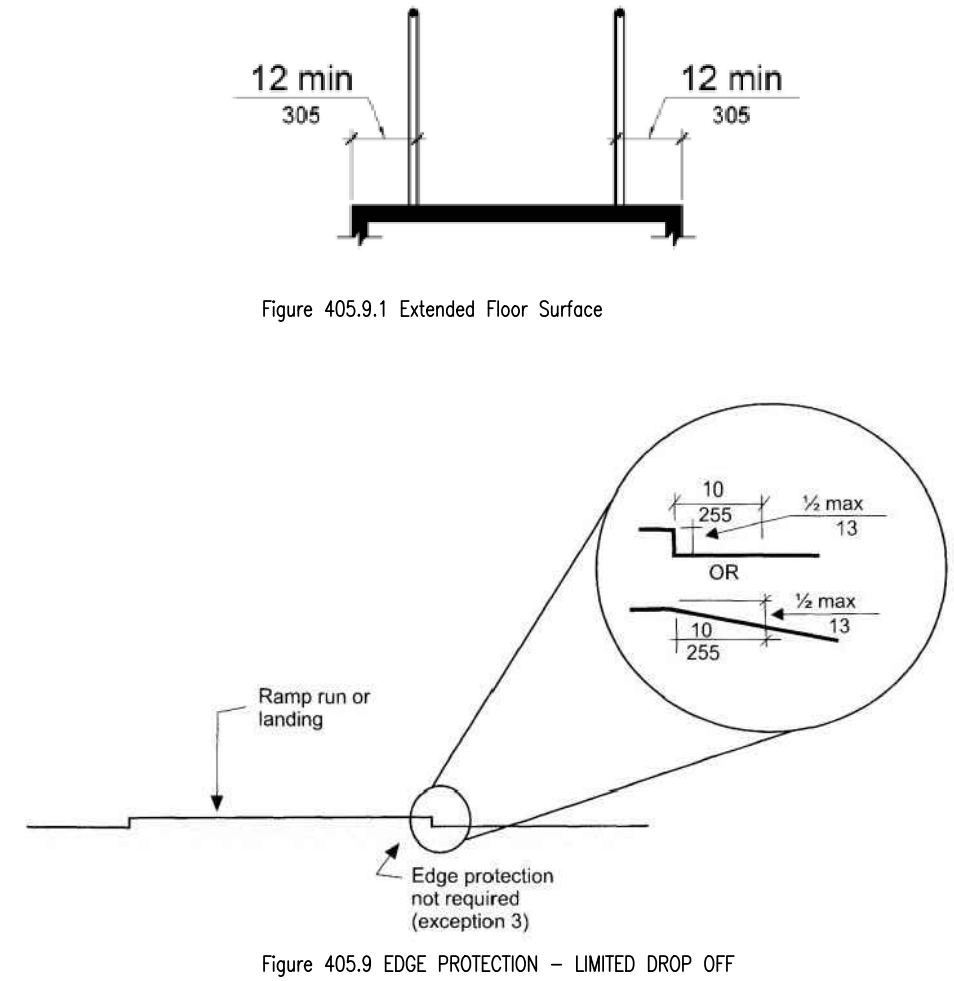
Figure 404.2.3.3 Maneuvering Clearances at Sliding and Folding Doors

405 RAMPS

405.9 Edge Protection. Edge protection complying with Section 405.9.1 or 405.9.2 shall be provided on each side of ramp runs and at each side of ramp landings.

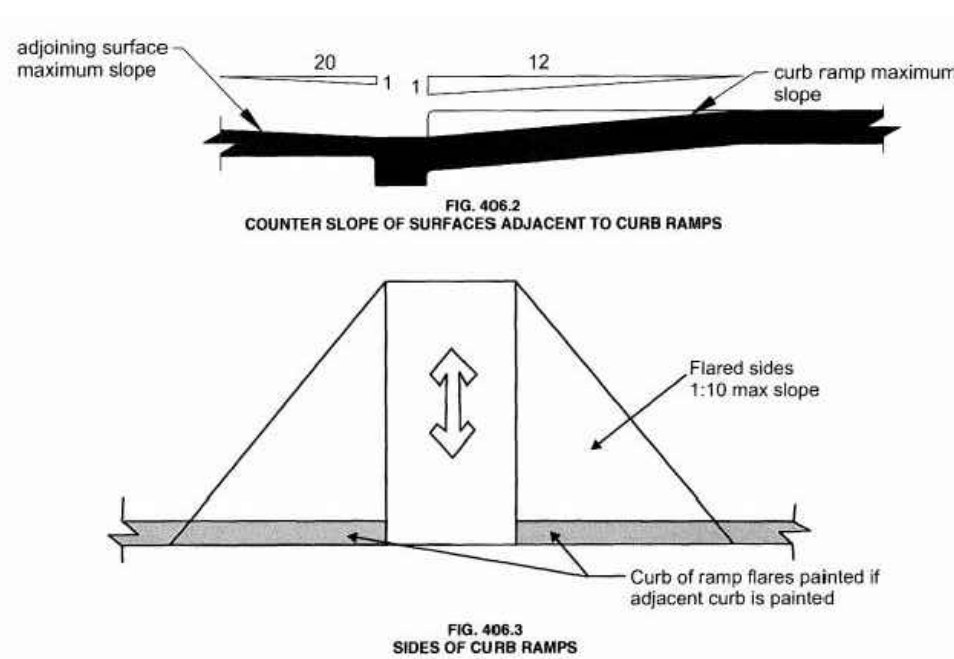
EXCEPTIONS:

- Edge protection shall not be required on ramp not required to have handrails and that have flared sides complying with Section 406.3.
 - Edge protection shall not be required on the sides of ramp landings serving an adjoining ramp run or stairway.
 - Edge protection shall not be required on the sides of ramp landings having a vertical dropoff of 1/2 inch (13 mm) maximum within 10 inches (255 mm) horizontally of the minimum landing area specified in Section 405.7.
 - Edge protection shall not be required on the sides of ramped aisles where the ramps provide access to the adjacent seats and aisle access ways.
- 405.9.1 Extended Floor Surface. The floor surface of the ramp run or ramp landing shall extend 12 inches (305 mm) minimum beyond the inside face of a railing complying with Section 505.
- 405.9.2 Curb or Barrier. A curb complying with Section 405.9.2.1 or a barrier complying with Section 409.2.2 shall be provided.
- 405.9.2.1 Curb. A curb shall be a minimum of 41 inches (100 mm) in height.
- 405.9.2.2 Barrier. Barriers shall be constructed so that the barrier prevents the passage of a 4-inch (100 mm) diameter sphere where any portion of the sphere is within 4 inches (100 mm) of the floor.
- 405.10 Wet Conditions. Landings subject to wet conditions shall be designed to prevent the accumulation of water.

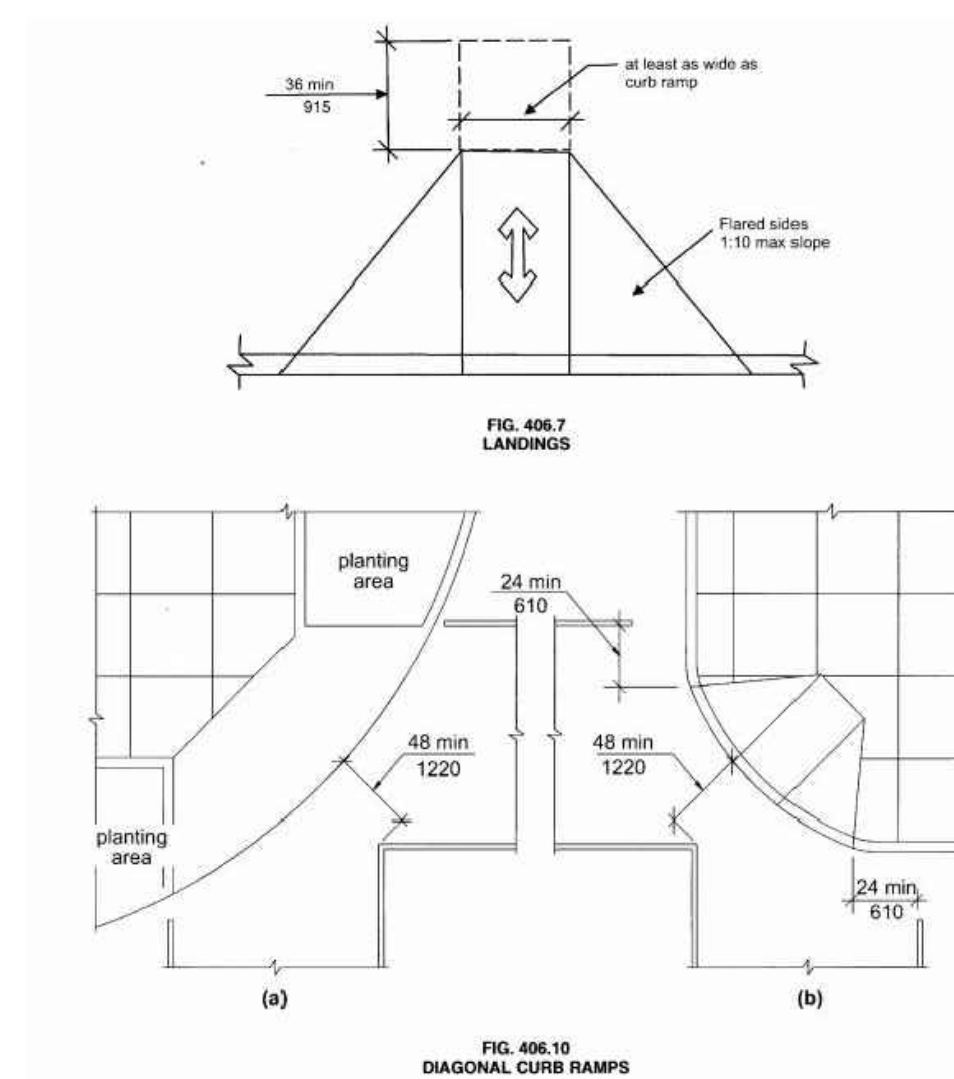


406 CURB RAMPS

- 406.1 General. Curb ramps on accessible routes shall comply with Sections 406, 405.2, 405.3, and 405.10.
- 406.2 Counter Slope. Counter slopes of adjoining gutters and road surfaces immediately adjacent to the curb ramp shall not be steeper than 1:20. The adjacent surfaces at transitions at curb ramps to walks, gutters and streets shall be at the same level.
- 406.3 Sides of Curb Ramps. Where provided, curb ramp flares shall comply with Section 406.3.
- 406.3.1 Slope. Flares shall not be steeper than 1:10.
- 406.3.2 Marking. If curbs adjacent to the ramp flares are painted, the painted surface shall extend along the flared portion of the curb.
- 406.4 Width. Curb ramps shall be 36 inches (915 mm) minimum in width, exclusive of flared sides.
- 406.5 Floor Surface. Floor surfaces of curb ramps shall comply with Section 302.
- 406.6 Location. Curb ramps and the flared sides of curb ramps shall be located so they do not project into vehicular traffic lanes, parking spaces, or parking access aisles. Curb ramps at marked crossings shall be wholly contained within the markings, excluding any flared sides.

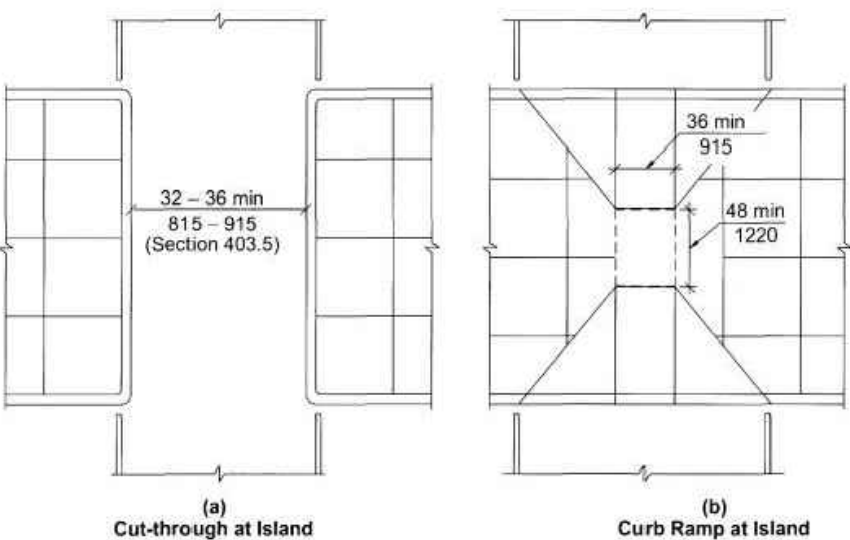


- 406.7 Landings. Landings shall be provided at the tops of curb ramps. The clear length of the landing shall be 36 inches (915 mm) minimum. The clear width of the landing shall be at least as wide as the curb ramp, excluding flared sides, leading to the landing.
- EXCEPTION: In alterations, where there is no landing at the top of curb ramps, curb ramp flares shall be provided and shall not be steeper than 1:12.
- 406.8 Obstructions. Curb ramps shall be located or protected to prevent their obstruction by parked vehicles.
- 406.9 Handrails. Handrails shall not be required on curb ramps.
- 406.10 Diagonal Curb Ramps. Diagonal or corner type curb ramps with returned curbs or other well defined edges shall have the edges parallel to the direction of pedestrian flow. The bottoms of diagonal curb ramps shall have 48 inches (1220 mm) minimum clear space outside active traffic lanes of the roadway. Diagonal curb ramps provided at marked crossings shall provide the 48 inches (1220 mm) minimum clear space within the markings. Diagonal curb ramps with flared sides shall have a segment of curb 24 inches (610 mm) minimum in length on each side of the curb ramp and within the marked crossings.



406 CURB RAMPS

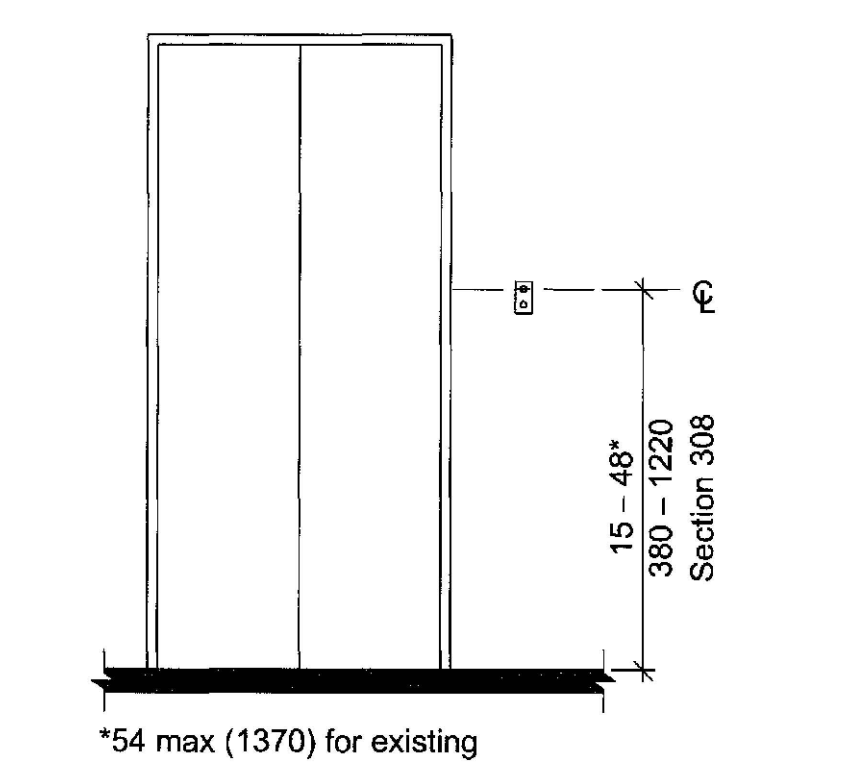
- 406.11 Islands. Raised islands in crossings shall be a cut-through level with the street or have curb ramps on both sides. Each curb ramp shall have a level area 48 inches (1220 mm) minimum in length and 36 inches (915 mm) minimum in width at the top of the curb ramp in the part of the island intersected by the crossings. Each 48-inch (1220 mm) by 36-inch (915 mm) area shall be oriented so the 48-inch (1220 mm) length is in the direction of the running slope of the curb ramp. The 48-inch (1220 mm) by 36-inch (915 mm) area and the accessible route shall be permitted to overlap.
- 406.12 Detectable Warnings at Raised Marked Crossings. Marked crossings that are raised to the same level as the adjoining sidewalk shall be preceded by a detectable warning 24 inches (610 mm) in depth complying with Section 705. The detectable warning shall extend the full width of the marked crossing.
- 406.13 Detectable Warnings at Curb Ramps. Where detectable warnings are provided on curb ramps, they shall comply with Sections 406.13 and 705.
- 406.13.1 Area Covered. Detectable warnings shall be 24 inches (610 mm) minimum in depth in the direction of travel. The detectable warning shall extend the full width of the curb ramp or flush surface.
- 406.13.2 Location. The detectable warning shall be located so the edge nearest the curb line is 6 inches (150 mm) minimum and 8 inches (205 mm) maximum from the curb line.
- 406.14 Detectable Warnings at Islands or Cut-through Medians. Where detectable warnings are provided on curb ramps at raised marked crossings leading to islands or cut-through medians, the island or cut-through median shall be provided with detectable warnings complying with Section 705, that are 24 inches (610 mm) in depth, and extend the full width of the pedestrian route or cut-through. Where such island or cut-through median is less than 48 inches (1220 mm) in depth, the entire width and depth of the pedestrian route or cut-through shall have detectable warnings.



407 ELEVATORS

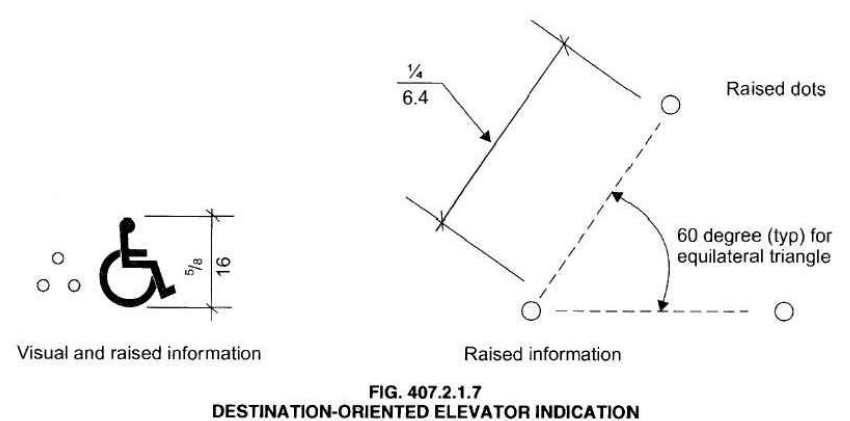
- 407.1 General. Elevators shall comply with 407 and with ASME A17.1 (Incorporated by reference, see "Referenced Standards" in Chapter 1). They shall be passenger elevators as classified by ASME A17.1. Elevator operation shall be automatic.

- 407.2 Elevator Landing Requirements. Elevator landings shall comply with 407.2.
- 407.2.1 Call Controls. Where elevator call buttons or keypads are provided, they shall comply with 407.2.1 and 309.4. Call buttons shall be raised or flush.
- EXCEPTION: Existing elevators shall be permitted to have recessed call buttons.
- 407.2.1.1 Height. Call buttons and keypads shall be located within one of the reach ranges specified in 308, measured to the centerline of the highest operable part.
- EXCEPTION: Existing call buttons and existing keypads shall be permitted to be located at 54 inches (1370 mm) maximum above the finish floor, measured to the centerline of the highest operable part.



- 407.2.1.2 Size. Call buttons shall be 3/4 inch (19 mm) minimum in the smallest dimension.
- EXCEPTION: Existing elevator call buttons shall not be required to comply with 407.2.1.2.
- 407.2.1.3 Clear Floor or Ground Space. A clear floor or ground space complying with 305 shall be provided at call controls.
- 407.2.1.4 Location. The call button that designates the up direction shall be located above the call button that designates the down direction.
- EXCEPTION: Destination-oriented elevators shall not be required to comply with 407.2.1.4.
- 407.2.1.5 Signals. Call buttons shall have visible signals to indicate when each call is registered and when each call is answered.
- EXCEPTIONS:

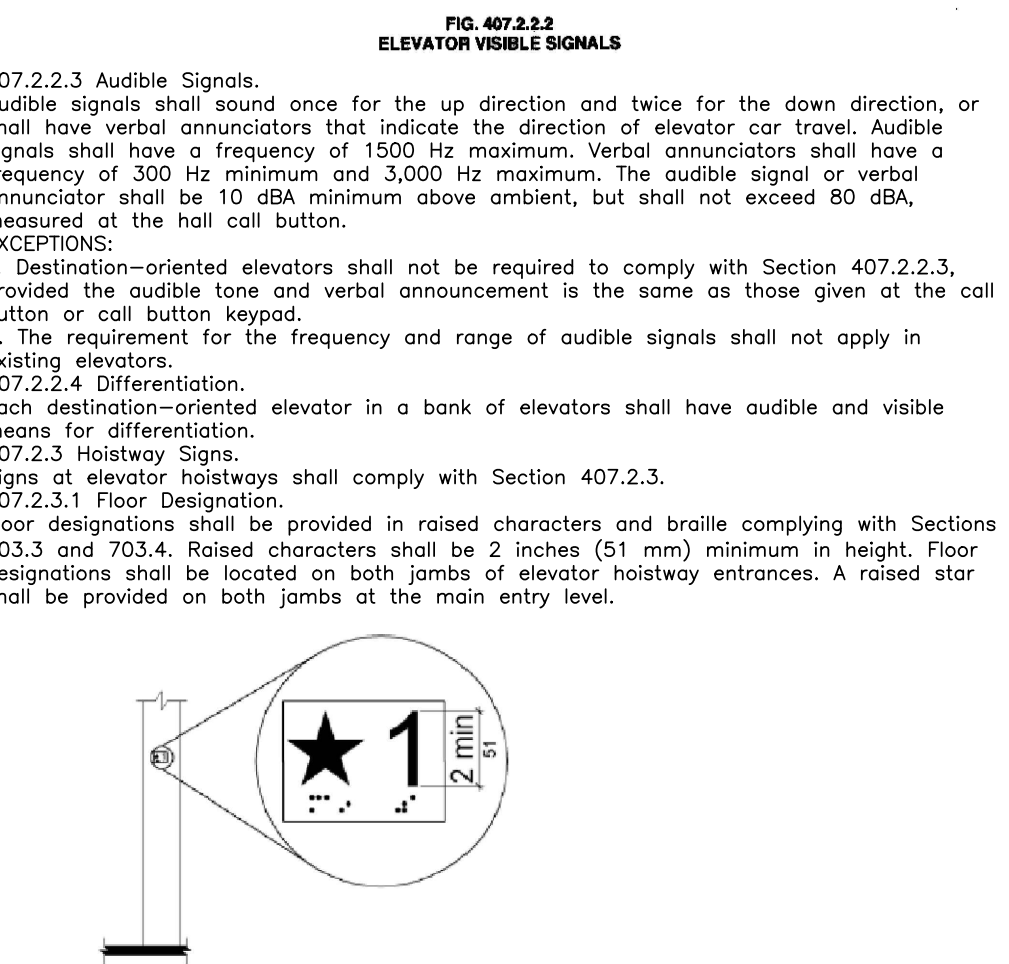
- Destination-oriented elevators shall not be required to comply with 407.2.1.5 provided that visible and audible signals complying with 407.2.2 indicating which elevator car to enter are provided.
- Existing elevators shall not be required to comply with 407.2.1.5.
- 407.2.1.6 Keypads. Where keypads are provided, keypads shall be in a standard telephone keypad arrangement and shall comply with Section 407.4.7.2.
- 407.2.1.7 Destination-oriented Elevator Signals. Destination-oriented elevators shall be provided with a visible signal and audible tones and verbal announcements to indicate which car is responding to a call. The audible tone and verbal announcement shall be activated by pressing a function button. The function button shall be identified by the International Symbol for Accessibility and a raised indicator. The International Symbol for Accessibility, complying with Section 703.6.3.1, shall be 5/8 inch (16 mm) in height and be a visual character complying with Section 703.2. The indication shall be three raised dots, spaced 1/4 inch (6.4 mm) at base diameter, in the form of an equilateral triangle. The function button shall be located immediately below the keypad arrangement or floor buttons.



407 ELEVATORS CONT.

- 407.2.2 Hall Signals.
- Hall signals, including in-car signals, shall comply with Section 407.2.2.
- 407.2.2.1 Visible and Audible Signals. A visible and audible signal shall be provided at each hoistway entrance to indicate which car is answering a call and the car's direction of travel. Where in-car signals are provided they shall be visible from the floor area adjacent to the hall call buttons.
- EXCEPTIONS:
- Destination-oriented elevators shall not be required to comply with Section 407.2.2.1, provided a visible signal and audible tones and verbal announcements complying with Section 407.2.1.7 are provided.
 - In existing elevators, a signal indicating the direction of car travel shall not be required.
- 407.2.2.2 Visible Signals.
- Visible signal fixtures shall be centered at 72 inches (1830 mm) minimum above the floor. The visible signal elements shall be 2 1/2 inches (64 mm) minimum between the uppermost and lowest edges of the illuminated shape measured vertically. Signals shall be visible from the floor area adjacent to the hall call button.
- EXCEPTIONS:

- Destination-oriented elevators shall be permitted to have signals visible from the floor area adjacent to the hoistway entrance.
- Existing elevators shall not be required to comply with Section 407.2.2.2.



- 407.2.2.3 Audible Signals.
- Audible signals shall sound once for the up direction and twice for the down direction, or shall have verbal annunciators that indicate the direction of elevator car travel. Audible signals shall have a frequency of 1500 Hz maximum. Verbal annunciators shall have a frequency of 300 Hz minimum and 3,000 Hz maximum. The audible signal or verbal annunciator shall be 10 dBA minimum above ambient, but shall not exceed 80 dBA, measured at the hall call button.
- EXCEPTIONS:

- Destination-oriented elevators shall not be required to comply with Section 407.2.2.3, provided the audible tone and verbal announcement is the same as those given at the call button or call button keypad.
 - The requirement for the frequency and range of audible signals shall not apply in existing elevators.
- 407.2.2.4 Differentiation.
- Each destination-oriented elevator in a bank of elevators shall have audible and visible means for differentiation.
- 407.2.3 Hoistway Signs.
- Signs of elevator hoistways shall comply with Section 407.2.3.
- 407.2.3.1 Floor Designation. Floor designations shall be provided in raised characters and braille complying with Sections 703.3 and 703.4. Raised characters shall be 2 inches (51 mm) minimum in height. Floor designations shall be located on both jambs of elevator hoistway entrances. A raised start shall be provided on both jambs at the main entry level.

- Figure 407.2.3.1 Floor Designation
- 407.2.3.2 Destination-oriented Elevator Car Identification
- 407.3 Elevator Door Requirements.
- Hoistway and elevator car doors shall comply with Section 407.3.
- 407.3.1 Type.
- Elevator doors shall be horizontal sliding type. Car gates shall be prohibited.
- 407.3.2 Operation.
- Elevator hoistway and car doors shall open and close automatically.
- EXCEPTION: Existing manually operated hoistway swing doors shall be permitted, provided the following criteria are met:

- The hoistway doors comply with Sections 404.2.2 and 404.2.8;
 - The car door closing is not initiated until the hoistway door is closed.
- 407.3.3 Reopening Devices.
- Elevator doors shall be provided with a reopening device complying with Section 407.3.3 that shall stop and reopen a car door and hoistway door automatically if the door becomes obstructed by an object or person.
- EXCEPTION: In existing elevators, manually operated doors shall not be required to comply with Section 407.3.3.
- 407.3.3.1 Height.
- The reopening device shall be activated by sensing an obstruction passing through the opening at 5 inches (125 mm) nominal and 29 inches (735 mm) nominal above the floor.
- 407.3.3.2 Contact.
- The reopening device shall not require physical contact to be activated, although contact shall be permitted before the door reverses.
- 407.3.3.3 Duration.
- The reopening device shall remain effective for 20 seconds minimum.
- 407.3.4 Door and Signal Timing.
- The minimum acceptable time from notification that a car is answering a call until the doors of that car start to close shall be calculated from the following equation: $T = D/(15 \text{ ft/s})$ or $T = D/(455 \text{ mm/s}) = 5$ seconds minimum, where T equals the total time in seconds and D equals the distance (in feet or millimeters) from the point in the lobby or corridor (60 inches (1525 mm) directly in front of the farthest call button controlling that car to the centerline of its hoistway door.
- EXCEPTIONS:

- For cars with in-car lanterns, T shall be permitted to begin when the signal is visible from the point 60 inches (1525 mm) directly in front of the farthest hall call button and the audible signal is sounded.
 - Destination-oriented elevators shall not be required to comply with Section 407.3.4.
- 407.3.5 Door Delay.
- Elevator doors shall remain fully open in response to a car call for 3 seconds minimum.
- 407.3.6 Width.
- Elevator door clear opening width shall comply with Table 407.4.1.
- EXCEPTION: In existing elevators, a power-operated car door complying with Section 404.2.2 shall be permitted.
- 407.4 Elevator Car Requirements.
- Elevator cars shall comply with Section 407.4.
- 407.4.1 Inside Dimensions.
- Inside dimensions of elevator cars shall comply with Table 407.4.1.
- EXCEPTION: Existing elevator car configurations that provide a clear floor area of 16 square feet (1.5 m²) minimum, and provide a clear inside dimension of 36 inches (915mm) minimum in width and 54 inches (1370 mm) minimum in depth, shall be permitted.

Table 407.4.1 Elevator Car Dimensions				
Door Location	Door Clear Width	Minimum Dimensions	Minimum Dimensions	Minimum Dimensions
Centered	42 inches (1065mm)	80 inches (2030mm)	51 inches (1295mm)	54 inches (1370mm)
Side (off-centered)	36 inches (915mm)	68 inches (1725mm)	51 inches (1295mm)	54 inches (1370mm)
Any	36 inches (915mm)	54 inches (1370mm)	80 inches (2030mm)	80 inches (2030mm)
Any	36 inches (915mm)	60 inches (1525mm)	60 inches (1525mm)	60 inches (1525mm)

1. A tolerance of minus 5/8 inch (16 mm) is permitted.

2. Other car configurations that provide a 36-inch (915 mm) door clear opening width and a turning space complying with Section 304 with the door closed are permitted.

407 ELEVATORS CONT.

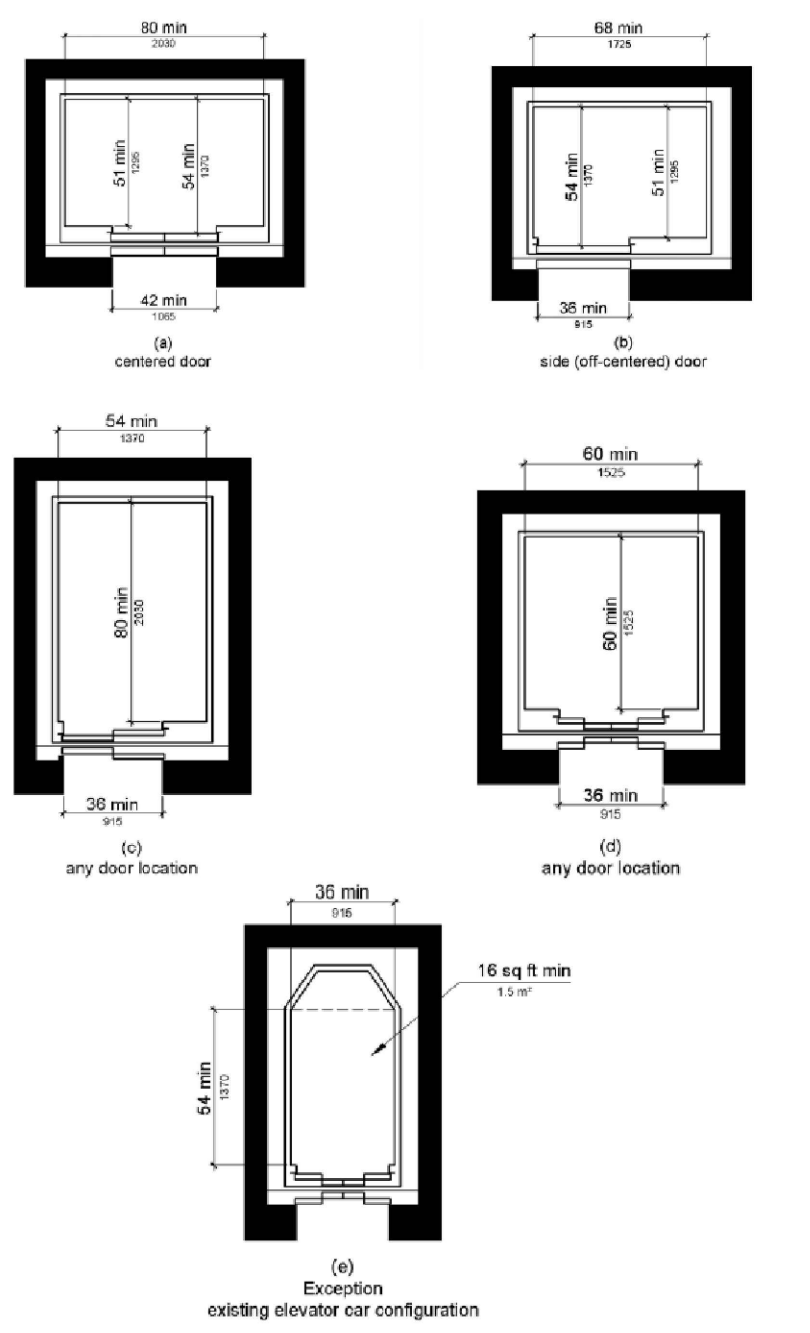
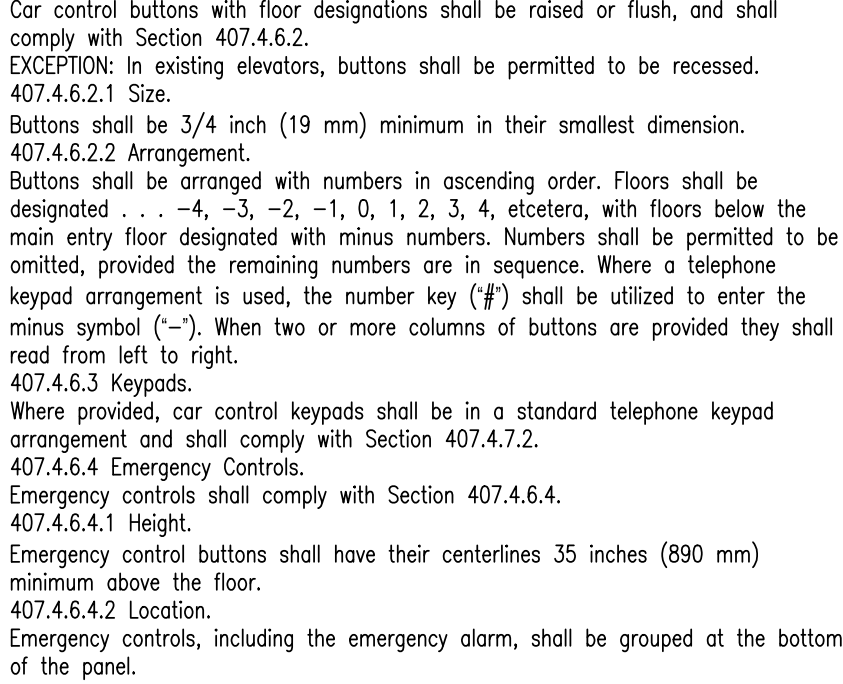


Figure 407.4.1 Elevator Car Dimensions

- 407.4.2 Floor Surfaces.
- Floor surfaces in elevator cars shall comply with Section 302.
- 407.4.3 Platform to Hoistway Clearance.
- The clearance between the car platform sill and the edge of any hoistway landing shall comply with ASME A17.1/CSA B44 listed in Section 105.2.5.
- 407.4.4 Leveling.
- Each car shall automatically stop and maintain position at floor landings within a tolerance of 1/2 inch (13 mm) under rated loading to zero loading conditions.
- 407.4.5 Illumination.
- The level of illumination at the car controls, platform, car threshold and car landing sill shall comply with ASME A17.1/CSA B44 listed in Section 105.2.5.
- 407.4.6 Elevator Car Controls.
- Where provided, elevator car controls shall comply with Sections 407.4.6 and 309.
- EXCEPTION: In existing elevators, where a new car operating panel complying with Section 407.4.6 is provided, existing car operating panels shall not be required to comply with Section 407.4.6.
- 407.4.6.1 Location.
- Controls shall be located within one of the reach ranges specified in Section 308.
- EXCEPTIONS:

- Where the elevator panel complies with Section 407.4.8.
 - In existing elevators, where a parallel approach is provided to the controls, car control buttons with floor designations shall be permitted to be located 54 inches (1370 mm) maximum above the floor. Where the panel is changed, it shall comply with Section 407.4.6.1.
- 407.4.6.2 Buttons.
- Car control buttons with floor designations shall be raised or flush, and shall comply with Section 407.4.6.2.
- EXCEPTION: In existing elevators, buttons shall be permitted to be recessed.
- 407.4.6.2.1 Size.
- Buttons shall be 3/4 inch (19 mm) minimum in their smallest dimension.
- 407.4.6.2.2 Arrangement.
- Buttons shall be arranged with numbers in ascending order. Floors shall be designated --, -, 4, -3, -2, -1, 0, 1, 2, 3, 4, etcetera, with floors below the main entry floor designated with minus numbers. Numbers shall be permitted to be omitted, provided the remaining numbers are in sequence. Where a telephone keypad arrangement is used, the number key (#) shall be utilized to enter the minus symbol (-). When two or more columns of buttons are provided they shall read from left to right.
- 407.4.6.3 Keypads.
- Where provided, car control keypads shall be in a standard telephone keypad arrangement and shall comply with Section 407.4.7.2.
- 407.4.6.4 Emergency Controls.
- Emergency controls shall comply with Section 407.4.6.4.
- 407.4.6.4.1 Height.
- Emergency control buttons shall have their centerlines 35 inches (890 mm) minimum above the floor.
- 407.4.6.4.2 Location.
- Emergency controls, including the emergency alarm, shall be grouped at the bottom of the panel.

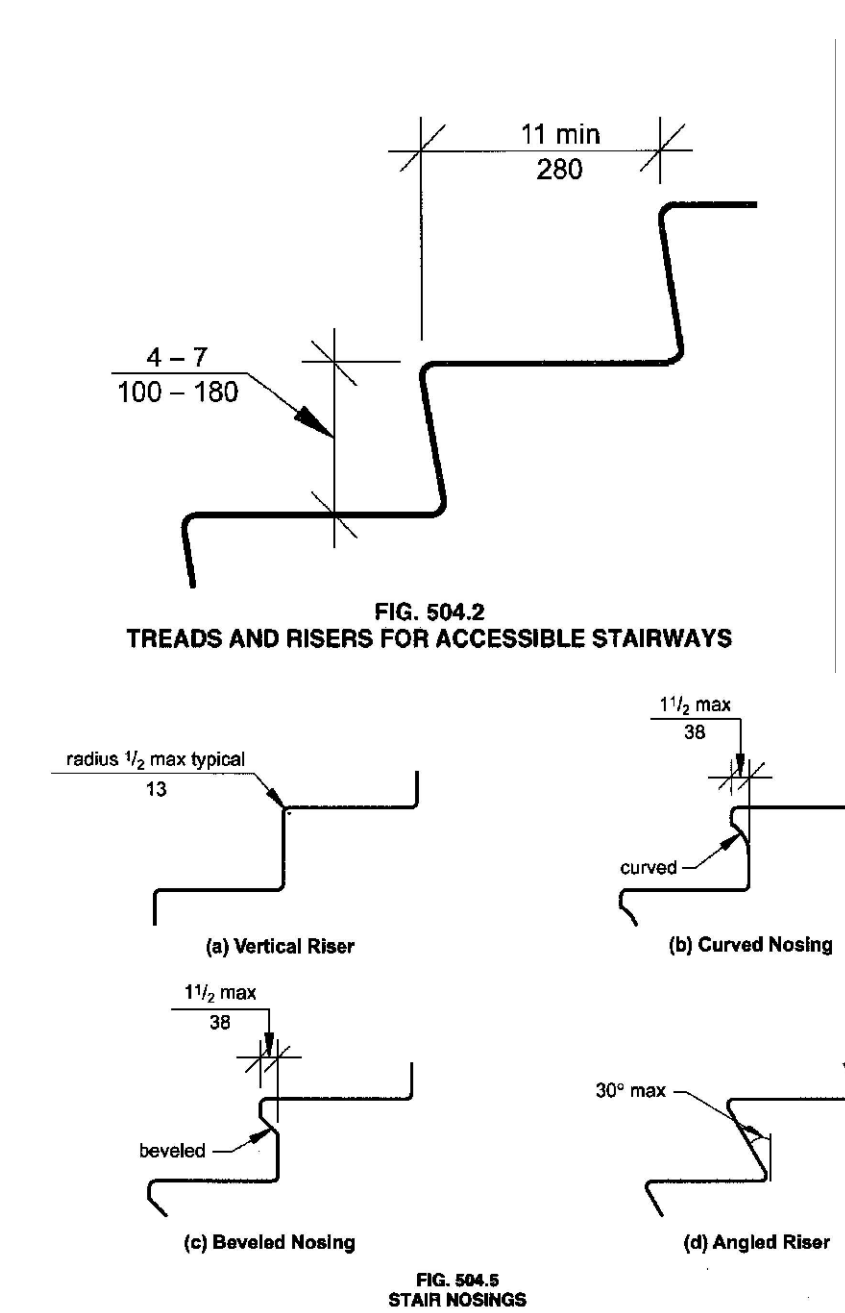


- Figure 407.4.6.2 Elevator Car Control Buttons
- 407.4.7 Designations and Indicators of Car Controls.
- Designations and indicators of car controls shall comply with Section 407.4.7.
- EXCEPTIONS:

- In existing elevators, where a new car operating panel complying with Section 407.4.7 is provided, existing car operating panels shall not be required to comply with Section 407.4.7.
 - Where existing building floor designations differ from the arrangement required by Section 407.4.6.2.2, or are alphanumeric, a new operating panel shall be permitted to use such existing building floor designations.
- 407.4.7.1 Buttons.
- Car control buttons shall comply with Section 407.4.7.1.
- 407.4.7.1.1 Type.
- Control buttons shall be identified by raised characters and braille complying with Sections 703.3 and 703.4.
- 407.4.7.1.2 Location.
- Raised character and braille designations shall be placed immediately to the left of the control button to which the designations apply. Where a negative number is used to indicate a negative floor, the braille designation shall be a cell with the dots 3 and 6 followed by the ordinal number.
- EXCEPTION: Where space on an existing car operating panel precludes raised characters and braille to the left of the control button, markings shall be placed as near to the control button as possible.
- 407.4.7.1.3 Symbols.
- The control button for the emergency stop, alarm, door open, door close, main entry floor, and phone, shall be identified with raised symbols and braille as shown in Table 407.4.7.1.3.
- 407.4.7.1.4 Visible Indicators.
- Buttons with floor designations shall be provided with visible indicators to show that a call has been registered. The visible indication shall extinguish when the car arrives at the designated floor.

504 STAIRWAYS

- 504.1 General.
- Accessible stairs shall comply with Section 504.
- 504.2 Treads and Risers.
- All steps on a flight of stairs shall have uniform riser height and uniform tread depth. Risers shall be 4 inches (100 mm) minimum and 1 inches (80 mm) maximum in height. Treads shall be 11 inches (280 mm) minimum in depth.
- 504.3 Open Risers.
- Open risers shall not be permitted.
- 504.4 Tread Surfaces.
- Stair treads shall comply with Section 302 and shall have a slope not steeper than 1:48.
- 504.5 Nosings.
- Where handrails are provided along walking surfaces the leading edge of the tread shall be 1/2 inch (13 mm) maximum. Nosings that project beyond risers shall have the underside of the leading edge curved or beveled. Risers shall be permitted to slope under the tread at an angle of 30 degrees maximum from vertical. The permitted projection of the nosing shall be 1/2 inches (38 mm) maximum over the tread or floor below.



- Figure 504.2 Treads and Risers for Accessible Stairways
- 504.6 Handrails. Stairs shall have handrails complying with 505.
- 504.7 Wet Conditions. Stair treads and landings subject to wet conditions shall be designed to prevent the accumulation of water.
- 504.8 Lighting.
- Lighting for interior stairways shall comply with Section 504.8.
- 504.8.1 Illumination Level.
- Lighting facilities shall be capable of providing 10 foot-candles (108 lux) of illuminance measured at the center of tread surfaces and on landing surfaces within 24 inches (610 mm) of step nosings.
- 504.8.2 Lighting Controls.
- If provided, occupancy-sensing automatic controls shall activate the stairway lighting so the illuminance level required by Section 504.8.1 is provided on the entrance landing, each stair flight adjacent to the entrance landing, and on the landings above and below the entrance landing prior to any step being used.
- 504.9 Stair Level Identification.
- Stair level identification signs in raised characters and braille complying with Sections 703.3 and 703.4 shall be located at each floor level landing in all enclosed stairways adjacent to the door leading from the stairwell into the corridor to identify the floor level. The exit door discharging to the outside or to the level of exit discharge shall have a sign with raised characters and braille stating "EXIT".

505 HANDRAILS

- 505.1 General.
- Handrails required by Section 405.8 for ramps, or Section 504.6 for stairs, shall comply with Section 505.
- 505.2 Location.
- Handrails shall be provided on both sides of stairs and ramps.
- EXCEPTIONS:

- In assembly seating areas, handrails shall not be required on both sides along aisle stairs, provided with a handrail either at the side or within the aisle.
 - In assembly seating areas, handrails shall not be required on the sides of ramped aisles serving seats.
- 505.3 Continuity.
- Handrails shall be continuous within the full length of each stair flight or ramp run. Inside handrails on switchback or dogleg stairs or ramps shall be continuous between flights or runs. Other handrails shall comply with Sections 505.10 and 307.
- EXCEPTION: Handrails shall not be required to be continuous in aisles serving seating where handrails are discontinuous to provide access to seating and to permit crossovers within the aisles.
- 505.4 Height.
- Top of gripping surfaces of handrails shall be 34 inches (865 mm) minimum and 38 inches (965 mm) maximum vertically above stair nosings, ramp surfaces and walking surfaces. Handrails shall be at a consistent height above stair nosings, ramp surfaces and walking surfaces.

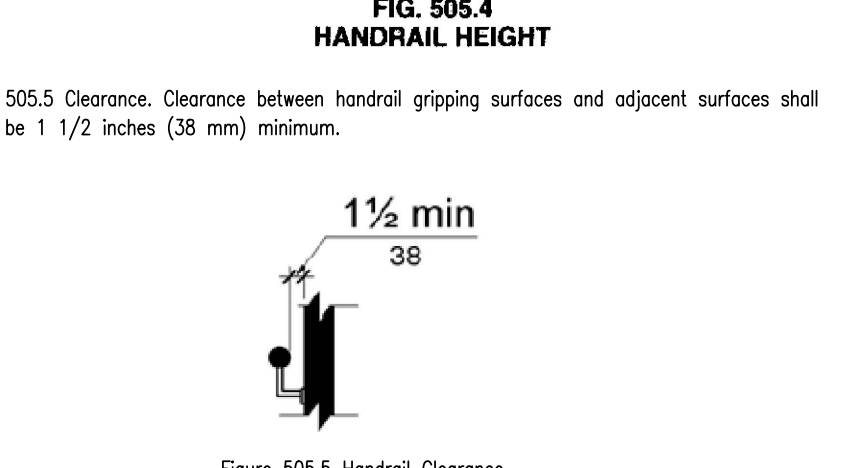
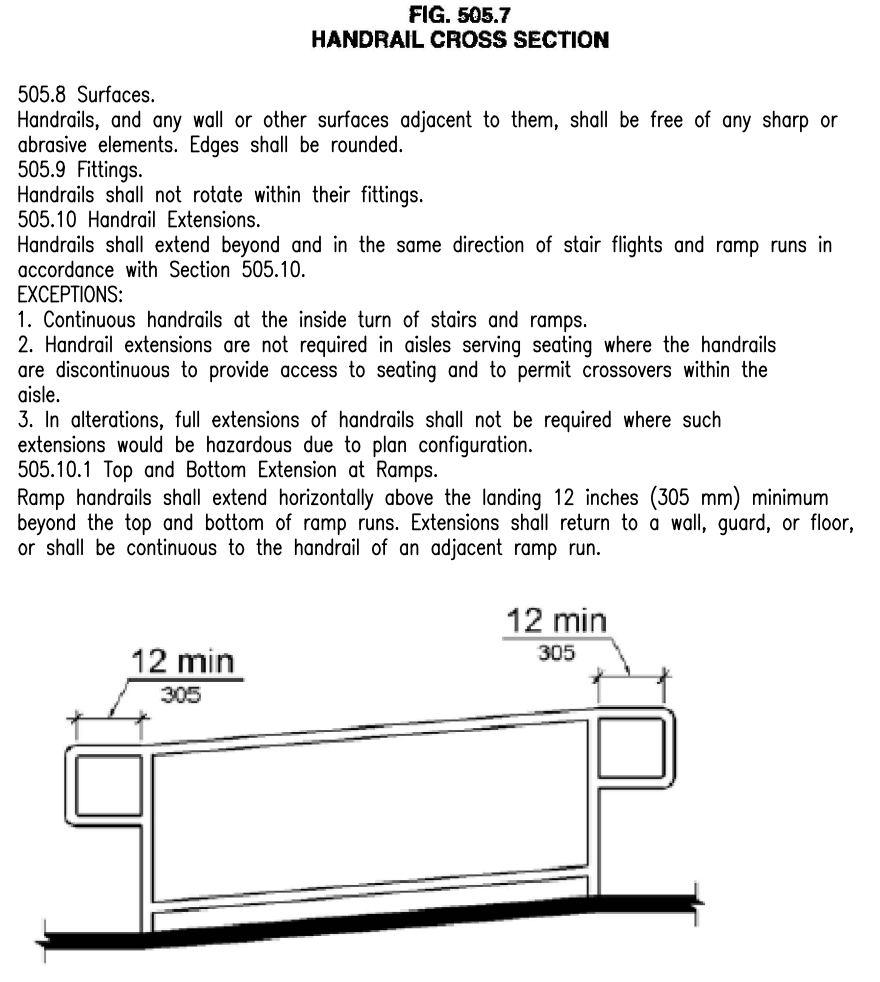


Figure 505.4 Handrail Height

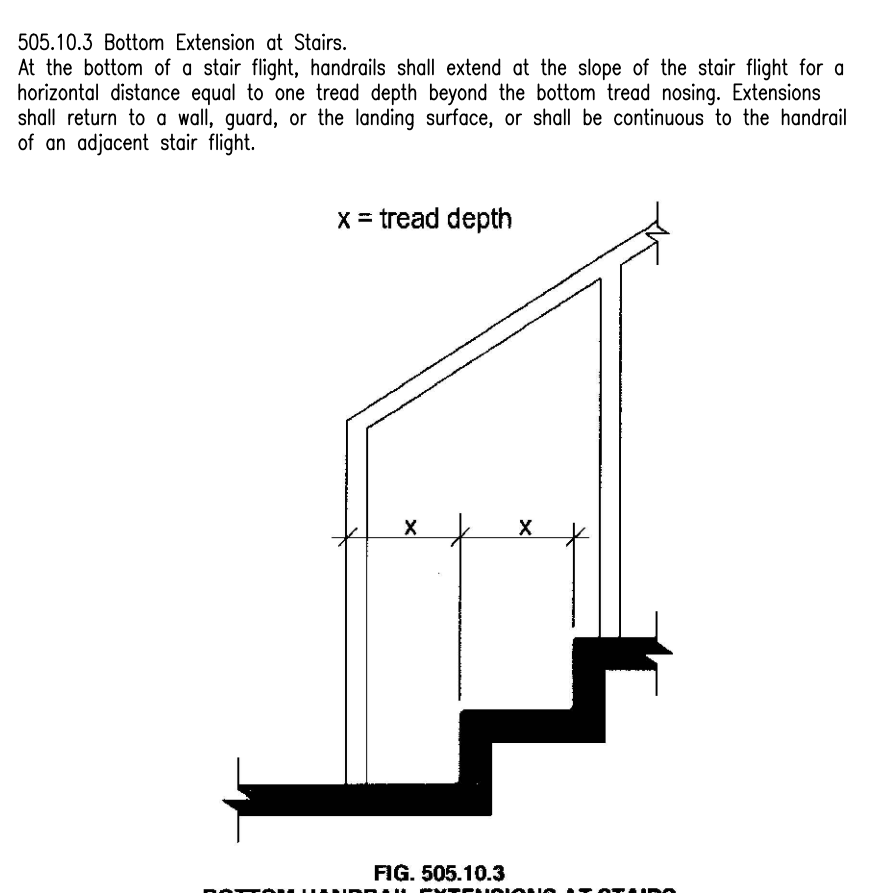
505 HANDRAILS CONT.

- 505.6 Gripping Surfaces.
- Gripping surfaces shall be continuous, without interruption by newel posts, other construction elements, or obstructions.
- EXCEPTIONS:

- Handrail brackets or balusters attached to the bottom surface of the handrail shall not be considered obstructions, provided the brackets or balusters comply with the following criteria:
 - Not more than 20 percent of the handrail length is obstructed.
 - Horizontal projections beyond the sides of the handrail occur 1 1/2 inches (38 mm) minimum below the bottom of the handrail, and provided that for each 1/2 inch (13mm) of additional handrail perimeter dimension above 4 inches (100 mm), the vertical clearance dimension of 1 1/2 inch (38 mm) can be reduced by 1/8 inch (3.2mm), and
 - Edges shall be rounded.
 - Where handrails are provided along walking surfaces with slopes not steeper than 1:20, the bottoms of handrail gripping surfaces shall be permitted to be obstructed along their entire length where they are integral to crash rails or bumper guards.
- 505.7 Cross Section. Handrail gripping surfaces shall have a cross section complying with 505.7.1 or 505.7.2.
- 505.7.1 Circular Cross Section. Handrails with a circular cross section shall have an outside dimension of 1 1/4 inches (32 mm) minimum and 2 inches (51mm) maximum.
- 505.7.2 Non-Circular Cross Sections. Handrails with a noncircular cross section shall have a perimeter dimension of 4 inches (100 mm) minimum and 6 1/4 inches (160 mm) maximum, and a cross-section dimension of 2 1/4 inches (57 mm) maximum.



- Figure 505.10.1 Top and Bottom Handrail Extension at Ramps
- 505.10.2 Top Extension at Stairs.
- At the top of a stair flight, handrails shall extend horizontally above the landing for 12 inches (305 mm) minimum beginning directly above the landing nosing. Extensions shall return to a wall, guard, or the landing surface, or shall be continuous to the handrail of an adjacent stair flight.
- 505.10.3 Bottom Extension of Stairs.
- At the bottom of a stair flight, handrails shall extend at the slope of the stair flight for a horizontal distance equal to one tread depth beyond the bottom tread nosing. Extensions shall return to a wall, guard, or the landing surface, or shall be continuous to the handrail of an adjacent stair flight.



506 WINDOWS

- 506.1 General.
- Accessible windows shall have operable parts complying with Section 308.

TED TROUT
ARCHITECT
AND ASSOCIATES, LTD.
Architecture • Planning • Interior Design
11111 Katy Freeway Suite 625
Houston, Texas 77075



CLIENT NAME
CALIBER INVESTMENT CORP.
P.O. BOX 6153
HUNTSVILLE, TEXAS 77342
PROJECT NAME

THE WEST HILL CENTER MALL

PROJECT LOCATION:
149 COL. ETHERIDGE BLVD.
HUNTSVILLE, TEXAS 77340

DATE	ISSUE
10.20.2020	PRELIMINARY
03.05.2021	PERMIT

DATE	03.05.2021
SCALE	A5 NOTED
PROJECT NUMBER	2023
DRAWN BY	DAA
SHEET TITLE	TEXAS ACCESSIBILITY STANDARDS

SHEET NUMBER

A0.4b

602 DRINKING FOUNTAINS

602.1 Scope.
Plumbing elements and facilities required to be accessible by scoping provisions adopted by the administrative authority shall comply with the applicable provisions of Chapter 6.
602 Drinking Fountains
602.1 General.
Accessible drinking fountains shall comply with Sections 602 and 307.
602.2 Clear Floor Space.
A clear floor space complying with Section 305, positioned for a forward approach to the drinking fountain, shall be provided. Knee and toe space complying with Section 306 shall be provided. The clear floor space shall be centered on the drinking fountain.
EXCEPTIONS:
1. Drinking fountains for standing persons.
2. Drinking fountains primarily for children's use shall be permitted where the spout outlet is 30 inches (760 mm) maximum above the floor, a parallel approach complying with Section 305 is provided and the clear floor space is centered on the drinking fountain.

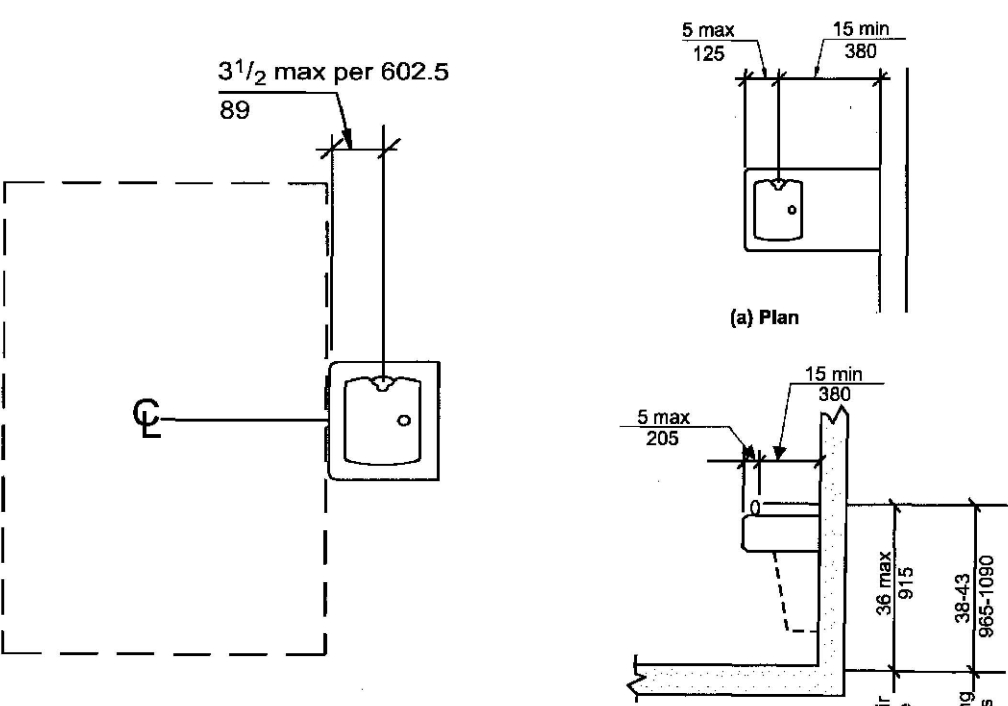


FIG. 602.2
PARALLEL APPROACH AT DRINKING FOUNTAINS
PRIMARILY FOR CHILDREN'S USE—(EXCEPTION 2)

602.3 Operable Parts.

Operable parts shall comply with Section 309.
602.4 Spout Outlet Height.
Spout outlets of wheelchair accessible drinking fountains shall be 36 inches (915 mm) maximum above the floor. Spout outlets of drinking fountains for standing persons shall be 38 inches (965 mm) minimum and 45 inches (1150 mm) maximum above the floor.
602.5 Spout Location.
The spout shall be located 15 inches (380 mm) minimum from the vertical support and 5 inches (125 mm) maximum from the front edge of the drinking fountain, including bumpers. Where only a parallel approach is provided, the spout shall be located 3 1/2 inches (90 mm) maximum from the front edge of the drinking fountain, including bumpers.
602.6 Water Flow.
The spout shall provide a flow of water 4 inches (100 mm) minimum in height. The angle of the water stream from spouts within 3 inches (75 mm) of the front of the drinking fountain shall be 30 degrees maximum, and from spouts between 3 inches (75 mm) and 5 inches (125 mm) from the front of the drinking fountain shall be 15 degrees maximum, measured horizontally relative to the front face of the drinking fountain.

603 TOILET AND BATHING ROOMS

603.1 General.
Accessible toilet and bathing rooms shall comply with Section 603.
603.2 Clearances.
603.2.1 Turning Space.
A turning space complying with Section 304 shall be provided within the room. The required turning space shall not be provided within a toilet compartment.
603.2.2 Door Swing.
Doors shall not swing into the clear floor space or clearance for any fixture.
EXCEPTIONS:
1. Doors to a toilet or bathing room for a single occupant, accessed only through a private office and not for common use or public use shall be permitted to swing into the clear floor space, provided the swing of the door can be reversed to comply with Section 603.2.2.
2. Where the room is for individual use and a clear floor space complying with Section 305.3 is provided within the room beyond the arc of the door swing, the door shall not be required to comply with Section 603.2.2.
603.3 Mirrors.
Where mirrors are located above lavatories, a mirror shall be located over the accessible lavatory and shall be mounted with the bottom edge of the reflecting surface 40 inches (1015 mm) maximum above the floor. Where mirrors are located above counters that do not contain lavatories, the mirror shall be mounted with the bottom edge of the reflecting surface 40 inches (1015 mm) maximum above the floor.
EXCEPTION: Other than within Accessible dwelling or sleeping units, mirrors are not required over the lavatories or counters if a mirror is located within the same toilet or bathing room and mounted with the bottom edge of the reflecting surface 35 inches (890 mm) maximum above the floor.
603.4 Coat Hooks and Shelves.
Coat hooks shall be located within one of the reach ranges specified in Section 308.
Shelves shall be 40 inches (1015 mm) minimum and 48 inches (1220 mm) maximum above the floor.
603.5 Diaper Changing Tables.
Diaper changing tables shall comply with Sections 309 and 902.
603.6 Operable Parts.
Operable parts on towel dispensers and hand dryers serving accessible lavatories shall comply with Table 603.6.

TABLE 603.6 MAXIMUM REACH DEPTH AND HEIGHT						
Maximum Reach Depth	0.5 inch (13 mm)	2 inches (51 mm)	5 inches (125 mm)	6 inches (150 mm)	9 inches (230 mm)	11 inches (280 mm)
Maximum Reach Height	48 inches (1220 mm)	46 inches (1170 mm)	42 inches (1065 mm)	40 inches (1015 mm)	36 inches (915 mm)	34 inches (865 mm)

604 WATER CLOSETS AND TOILET COMPARTMENTS

604.1 General.
Accessible water closets and toilet compartments shall comply with Section 604. Compartments containing more than one plumbing fixture shall comply with Section 603. Wheelchair accessible compartments shall comply with Section 604.9. Ambulatory accessible compartments shall comply with Section 604.10.
EXCEPTION: Water closets and toilet compartments primarily for children's use shall be permitted to comply with Section 604.11 as applicable.
604.2 Location.
The water closet shall be located with a wall or partition to the rear and to one side. The centerline of the water closet shall be 16 inches (405 mm) minimum and 18 inches (455 mm) maximum from the side wall or partition. Water closets located in ambulatory accessible compartments specified in Section 604.10 shall have the centerline of the water closet 17 inches (430 mm) minimum and 19 inches (485 mm) maximum from the side wall or partition.

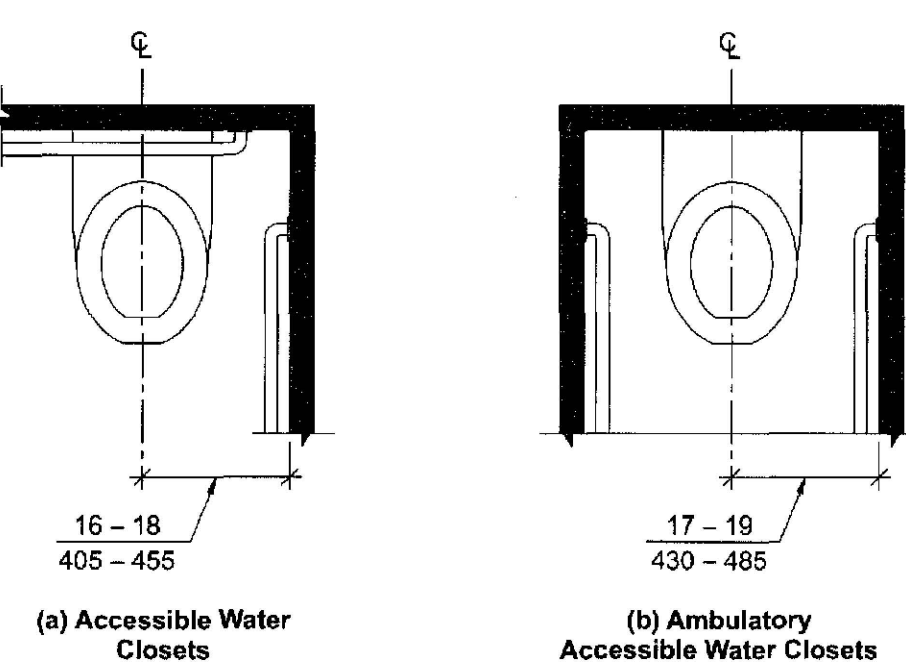


FIG. 604.2
WATER CLOSET LOCATION

604.3 Clearance

604.3.1 Clearance width.
Clearance around a water closet shall be 60 inches (1525 mm) minimum in width, measured perpendicular from the sidewall.
604.3.2 Clearance Depth.
Clearance around the water closet shall be 56 inches (1420 mm) minimum in depth, measured perpendicular from the rear wall.

604 WATER CLOSETS AND TOILET COMPARTMENTS CONT.

604.3.3 Clearance Overlap.
The required clearance around the water closet shall be permitted to overlap the water closet, associated grab bars, paper dispensers, sanitary napkin receptacles, coat hooks, shelves, accessible routes, clear floor space or other fixtures and the turning space. No other fixtures or obstructions shall be within the required water closet clearance.
604.4 Height.
The height of water closet seats shall be 17 inches (430 mm) minimum and 19 inches (485 mm) maximum above the floor, measured to the top of the seat. Seats shall not be sprung to return to a lifted position.
EXCEPTION: A water closet in a toilet room for a single occupant, accessed only through a private office and not for common use or public use, shall not be required to comply with Section 604.4.

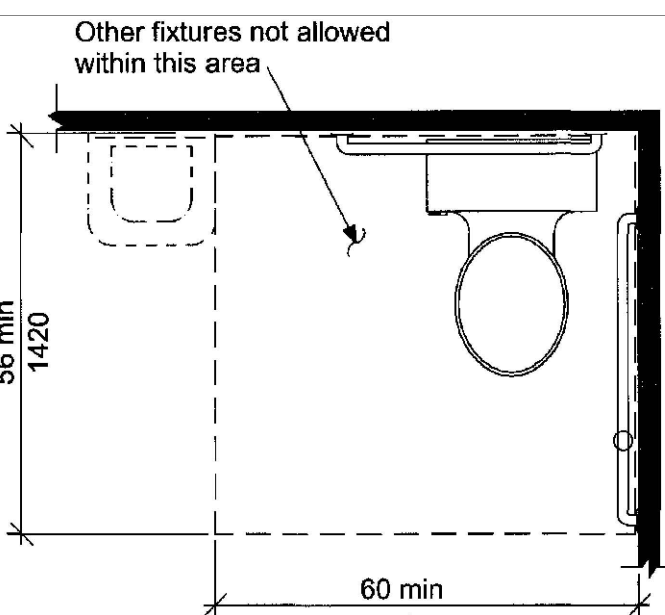
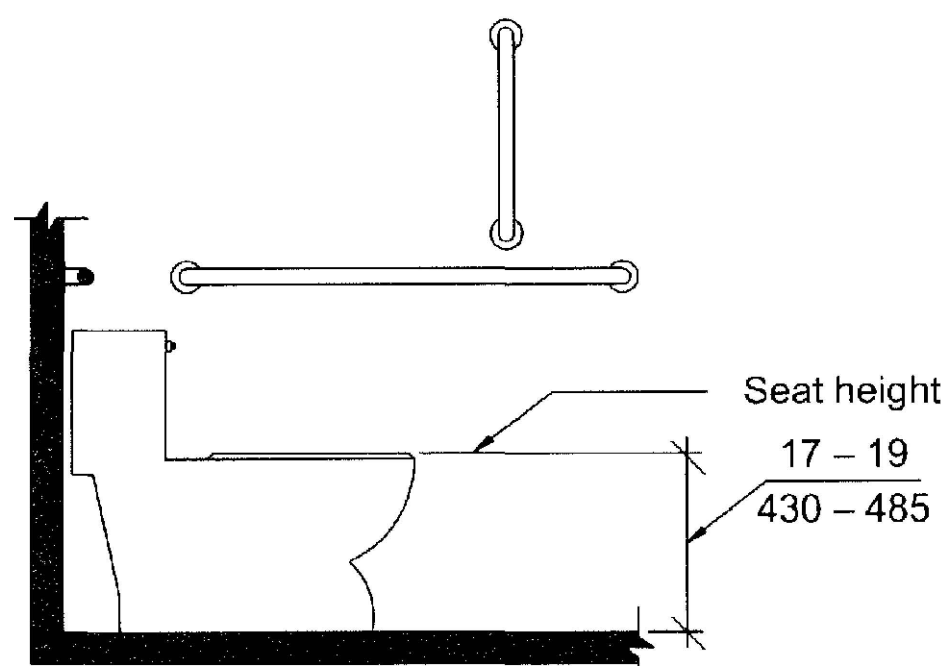


FIG. 604.3
SIZE OF CLEARANCE FOR WATER CLOSET

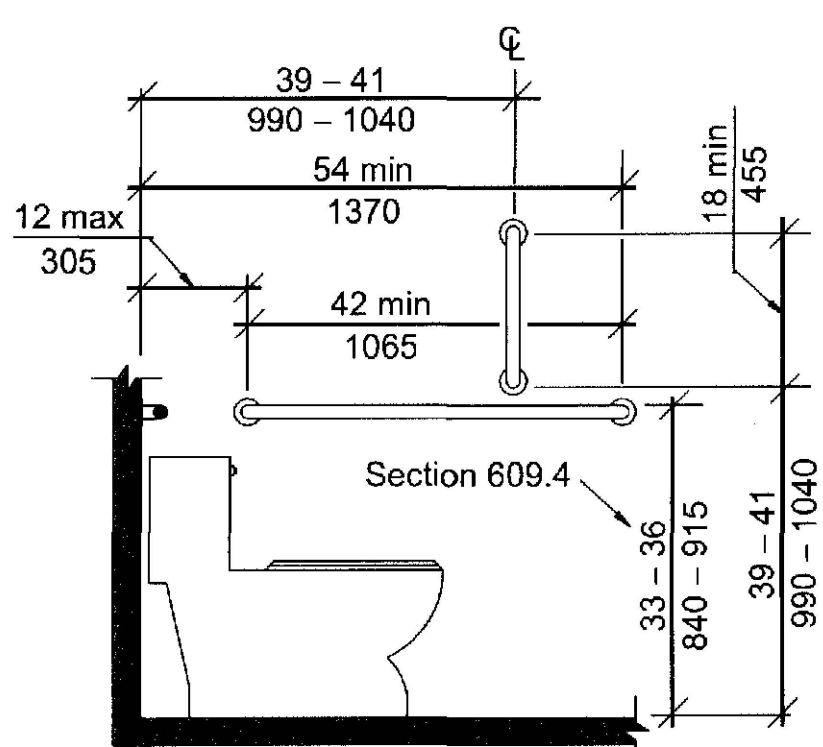
604.5 Grab Bars.
Grab bars for water closets shall comply with Section 609 and shall be provided in accordance with Sections 604.5.1 and 604.5.2. Grab bars shall be provided on the rear wall and on the sidewall closest to the water closet.
EXCEPTIONS:
1. Grab bars are not required to be installed in a toilet room for a single occupant, accessed only through a private office and not for common use or public use, provided reinforcement has been installed in walls and located so as to permit the installation of grab bars complying with Section 604.5.
2. In detention or correction facilities, grab bars are not required to be installed in housing or holding cells or rooms that are specially designed without protrusions for purposes of suicide prevention.

604.5.1 Fixed Side Wall Grab Bars.
Fixed side-wall grab bars shall be 42 inches (1065 mm) minimum in length, located 12 inches (305 mm) maximum from the rear wall and extending 54 inches (1370 mm) minimum from the rear wall. In addition, a vertical grab bar 18 inches (455 mm) minimum in length shall be mounted with the bottom of the bar located 39 inches (990 mm) minimum and 41 inches (1040 mm) maximum above the floor, and with the center line of the bar located 39 inches (990 mm) minimum and 41 inches (1040 mm) maximum from the rear wall.
EXCEPTION: The vertical grab bar at water closets primarily for children's use shall comply with Section 609.4.2.



Note: For children's dimensions see Fig. 604.11.4

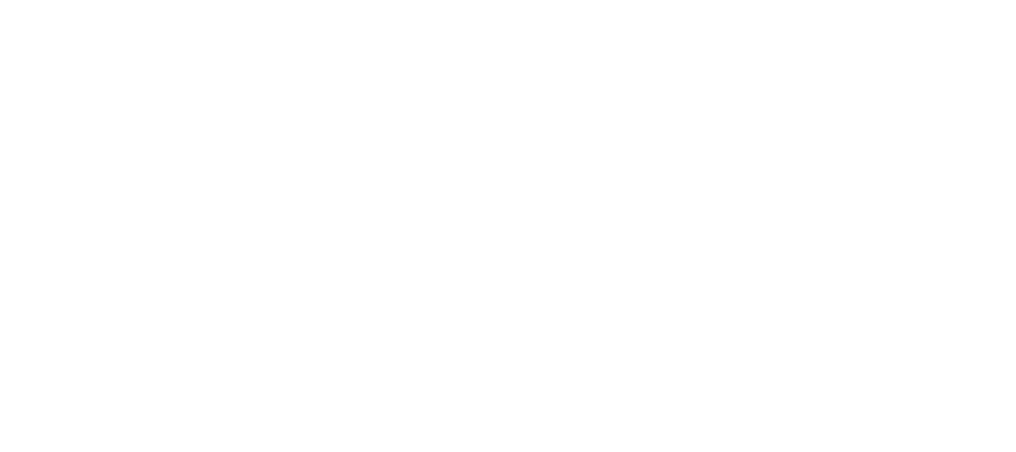
FIG. 604.4
WATER CLOSET SEAT HEIGHT



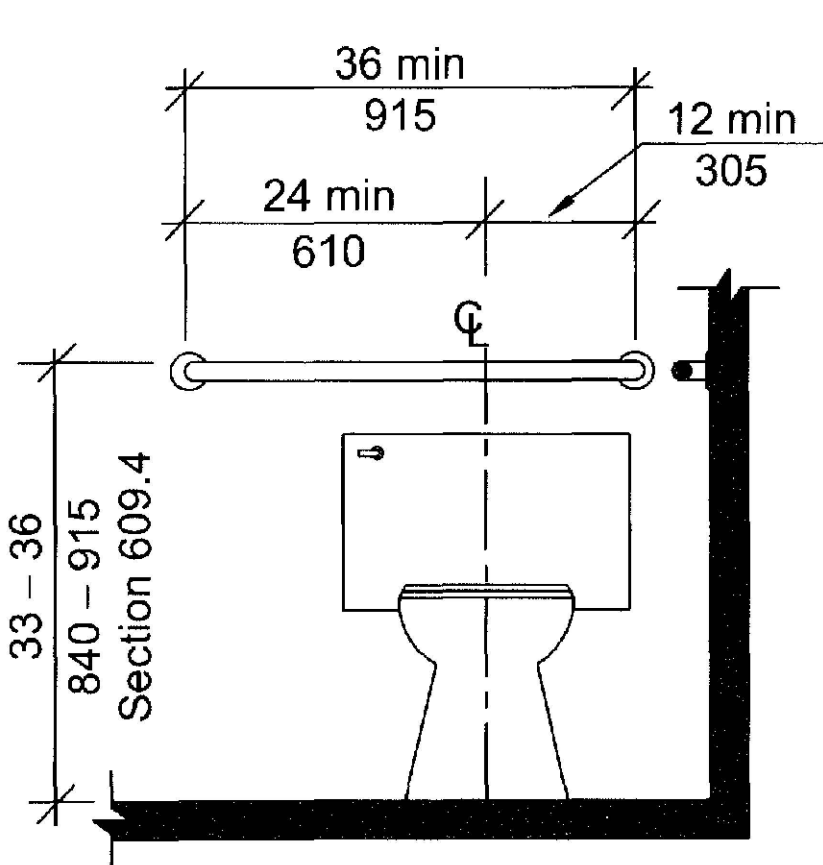
Note: For children's dimensions see Fig. 609.4.2

FIG. 604.5.1
SIDE WALL GRAB BAR FOR WATER CLOSET

604.5.2 Rear Wall Grab Bars.
The rear wall grab bar shall be 36 inches (915 mm) minimum in length, and extend from the centerline of the water closet 12 inches (305 mm) minimum on the side closest to the wall, and 24 inches (610 mm) minimum on the transfer side.
EXCEPTIONS:
1. The rear grab bar shall be permitted to be 24 inches (610 mm) minimum in length, centered on the water closet, where wall space does not permit a grab bar 36 inches (915 mm) minimum in length due to the location of a recessed fixture adjacent to the water closet.
2. Where an administrative authority requires flush controls for flush valves to be located in a position that conflicts with the location of the rear grab bar, that grab bar shall be permitted to be split or shifted to the open side of the toilet area.



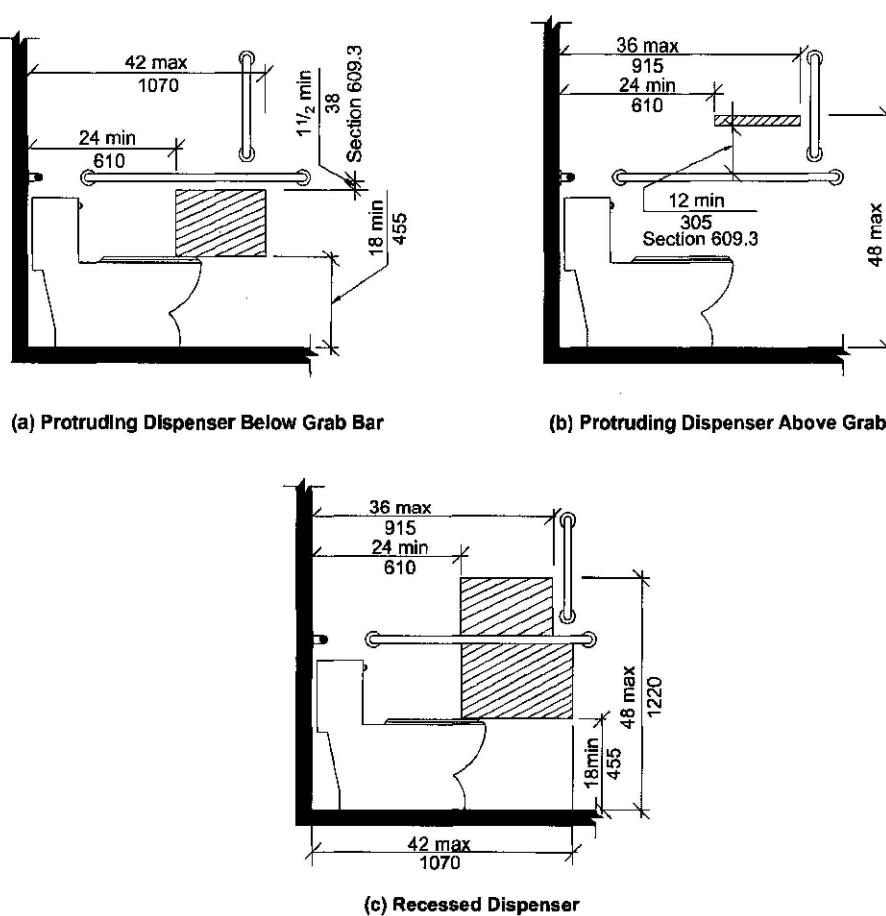
604 WATER CLOSETS AND TOILET COMPARTMENTS CONT.



Note: For children's dimensions see Fig. 609.4.2

FIG. 604.5.2
REAR WALL GRAB BAR FOR WATER CLOSET

604.6 Flush Controls.
Flush controls shall be hand operated or automatic. Hand operated flush controls shall comply with Section 309. Flush controls shall be located on the open side of the water closet.
EXCEPTION: In ambulatory accessible compartments complying with Section 604.10, flushcontrols shall be permitted to be located on either side of the water closet.
604.7 Dispensers.
Toilet paper dispensers shall comply with Section 309.4. Where the dispenser is located above the grab bar, the outlet of the dispenser shall be located within an area 24 inches (610 mm) minimum and 36 inches (915 mm) maximum from the rear wall. Where the dispenser is located below the grab bar, the outlet of the dispenser shall be located within an area 24 inches (610 mm) minimum and 42 inches (1065 mm) maximum from the rear wall. The outlet of the dispenser shall be located 18 inches (455 mm) minimum and 48 inches (1220 mm) maximum above the floor. Dispensers shall comply with Section 609.3. Dispensers shall not be of a type that control delivery, or do not allow continuous paper flow.
604.8 Coat Hooks and Shelves.
Coat hooks provided within toilet compartments shall be 48 inches (1220 mm) maximum above the floor. Shelves shall be 40 inches (1015 mm) minimum and 48 inches (1220 mm) maximum above the floor.



Note: For children's dimensions see Fig. 604.11.7 dispenser outlet location

FIG. 604.7
DISPENSER OUTLET LOCATION

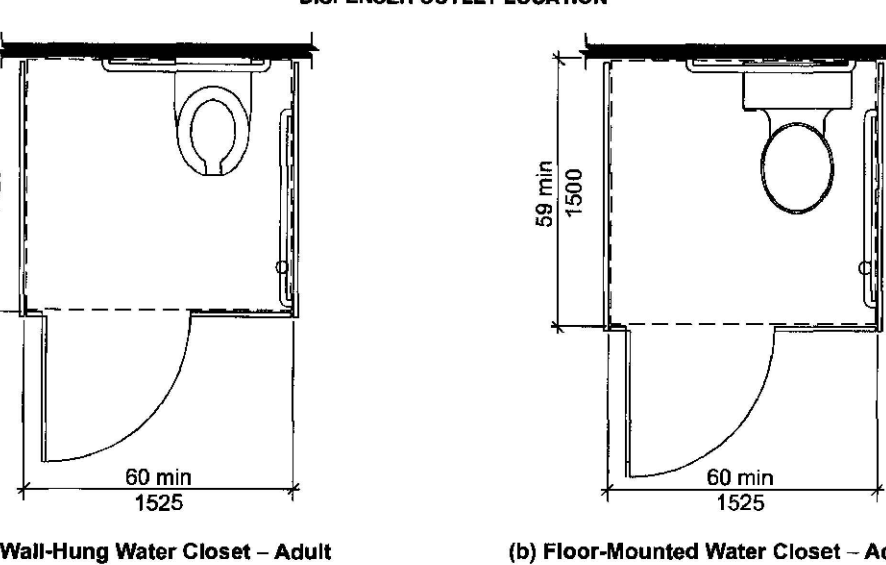


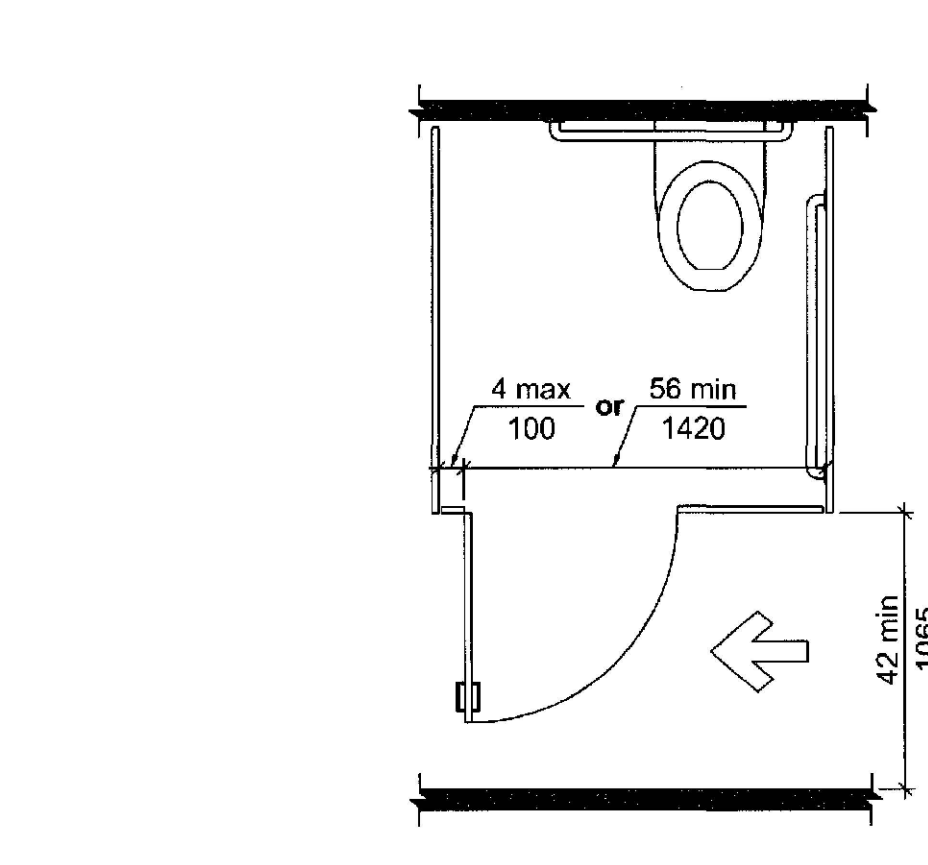
FIG. 604.9.2
WHEELCHAIR ACCESSIBLE TOILET COMPARTMENTS

604.9 Wheelchair Accessible Compartments.
604.9.1 General.
Wheelchair accessible compartments shall comply with Section 604.9.
604.9.2 Size.
Toilet compartments shall comply with Section 604.9.2.1 or 604.9.2.2 as applicable.
604.9.2.1 Minimum area.
The minimum area of a wheelchair accessible compartment shall be 60 inches (1525 mm) minimum in width measured perpendicular to the side wall, and 56 inches (1420 mm) minimum in depth for wall hung water closets, and 59 inches (1500 mm) minimum in depth for floor mounted water closets measured perpendicular to the rear wall.
604.9.2.2 Compartment for children's use.
The minimum area of a wheelchair accessible compartment primarily for children's use shall be 60 inches (1525 mm) minimum in width measured perpendicular to the side wall, and 59 inches (1500 mm) minimum in depth for wall hung and floor mounted water closets measured perpendicular to the rear wall.

604.9.3 Doors.
Toilet compartments doors, including door hardware, shall comply with Section 404, except if the approach is to the latch side of the compartment door clearance between the door side of the stall and any obstruction shall be 42 inches (1065 mm) minimum. The door shall be self-closing. A door pull complying with Section 404.2.6 shall be placed on both sides of the door near the latch. Toilet compartment doors shall not swing into the required minimum area of the compartment.
604.9.3.1 Door Opening Location.
The foremost edge of toilet compartment door opening shall be located in the front wall or partition or in the side wall or partition as required by Table 604.9.3.1.

Door Opening Location	Measured From		Dimension
	From the side wall or partition closest to the water closet	or	
Front Wall or Partition	From the side wall or partition closest to the water closet	or	56 inches (1420 mm) minimum
	From the rear wall	or	4 inches (100 mm) maximum
Side Wall or Partition Wall-Hung Water Closet	From the front wall or partition	or	52 inches (1320 mm) minimum
	From the rear wall	or	4 inches (100 mm) maximum
Side Wall or Partition Floor-Mounted Water Closet	From the front wall or partition	or	55 inches (1395 mm) minimum
	From the rear wall	or	4 inches (100 mm) maximum

604 WATER CLOSETS AND TOILET COMPARTMENTS CONT.



Note: For children's dimensions see Fig. 609.4.2

FIG. 604.9.3.1
WHEELCHAIR ACCESSIBLE COMPARTMENT DOOR OPENINGS

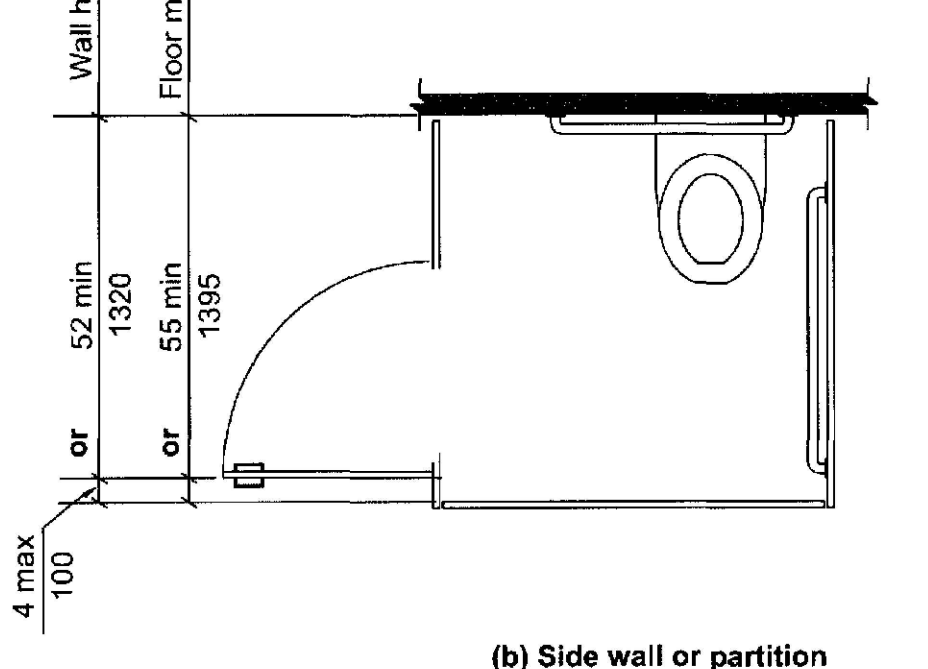


FIG. 604.9.3.1
WHEELCHAIR ACCESSIBLE COMPARTMENT DOOR OPENINGS

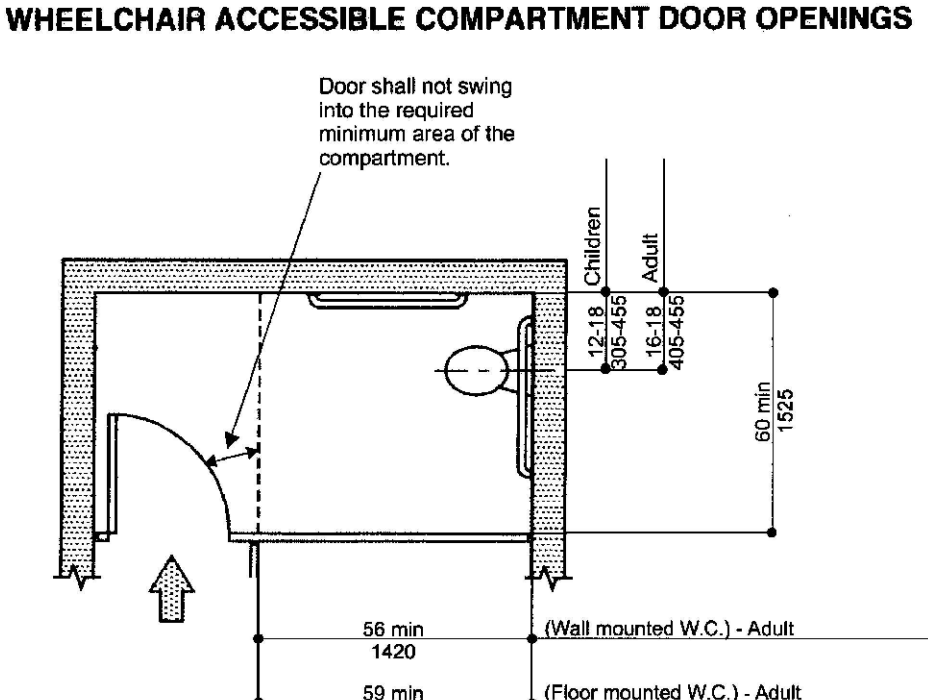


FIG. 604.9.3.1 (C)
WHEELCHAIR ACCESSIBLE COMPARTMENT DOOR OPENINGS—ALTERNATE

604.9.4 Approach.
Wheelchair accessible compartments shall be arranged for left-hand or right-hand approach to the water closet.
604.9.5 Toe Clearance.
Toe clearance for compartments primarily for children's use shall comply with Section 604.9.5.2. Toe clearance for other wheelchair accessible compartments shall comply with Section 604.9.5.1.
604.9.5.1 Toe Clearance of Compartments.
The front partition and at least one side partition shall provide a toe clearance of 9 inches (230 mm) minimum above the floor and extending 6 inches (150 mm) beyond the compartment side face of the partition, exclusive of partition support members.
EXCEPTIONS:
1. Toe clearance at the front partition is not required in a compartment greater than 62 inches (1575 mm) in depth with a wall-hung water closet, or greater than 65 inches (1650 mm) in depth with a floor-mounted water closet.
2. Toe clearance at the side partition is not required in a compartment greater than 66 inches (1675 mm) in depth.
604.9.5.2 Toe Clearance of Compartments for Children's Use.
The front partition and at least one side partition of compartments primarily for children's use shall provide a toe clearance of 12 inches (305 mm) minimum above the floor and extending 6 inches (150 mm) beyond the compartment side face of the partition, exclusive of partition support members.
EXCEPTIONS:
1. Toe clearance at the front partition is not required in a compartment greater than 65 inches (1650 mm) in depth.
2. Toe clearance at the side partition is not required in a compartment greater than 66 inches (1675 mm) in depth.

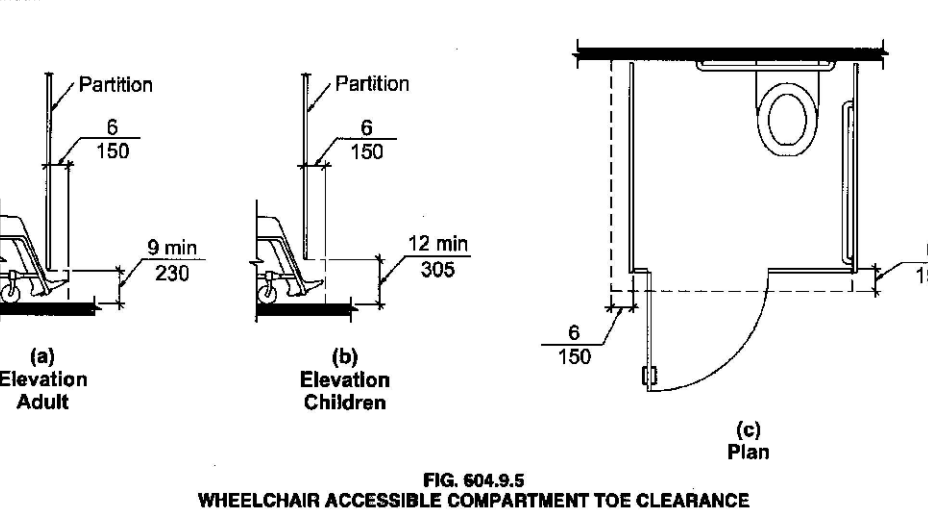
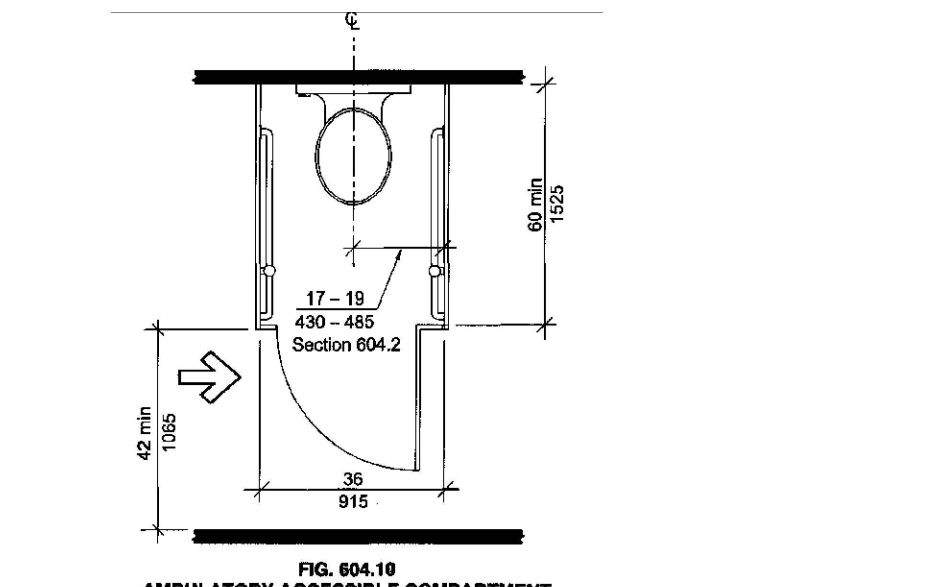


FIG. 604.9.5
WHEELCHAIR ACCESSIBLE COMPARTMENT TOE CLEARANCE

604.9.6 Grab Bars.
Grab bars shall comply with Section 609. Side wall grab bars complying with Section 604.5.1 located on the wall closest to the water closet, and a rear wall grab bar complying with Section 604.5.2, shall be provided.
604.10 Ambulatory Accessible Compartments.
604.10.1 General.
Ambulatory accessible compartments shall comply with Section 604.10.
604.10.2 Size.
The minimum area of an ambulatory accessible compartment shall be 60 inches (1525 mm) minimum in depth and 36 inches (915 mm) in width.
604.10.3 Doors.
Toilet compartment doors, including door hardware, shall comply with Section 404, except if the approach is to the latch side of the compartment door clearance between the door side of the stall and any obstruction shall be 42 inches (1065 mm) minimum. The door shall be self-closing. A door pull complying with Section 404.2.6 shall be placed on both sides of the door near the latch. Compartment doors shall not swing into the required minimum area of the compartment.
604.10.4 Grab Bars.
Grab bars shall comply with Section 609. Side wall grab bars complying with Section 604.5.1 shall be provided on both sides of the compartment.

604 WATER CLOSETS AND TOILET COMPARTMENTS CONT.



605 URINALS

605 Urinals
605.1 General.
Accessible urinals shall comply with Section 605.
605.2 Height and Depth.
Urinals shall be of the stall type or shall be of the wall hung type with the rim at 17 inches (430 mm) maximum above the floor. Wall hung urinals shall be 13 1/2 inches (345 mm) minimum in depth measured from the outer face of the urinal rim to the wall.

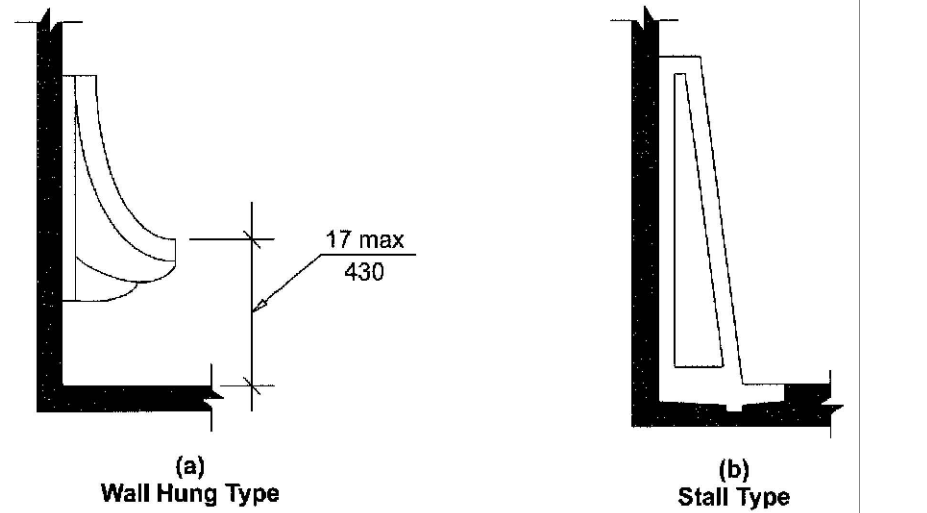
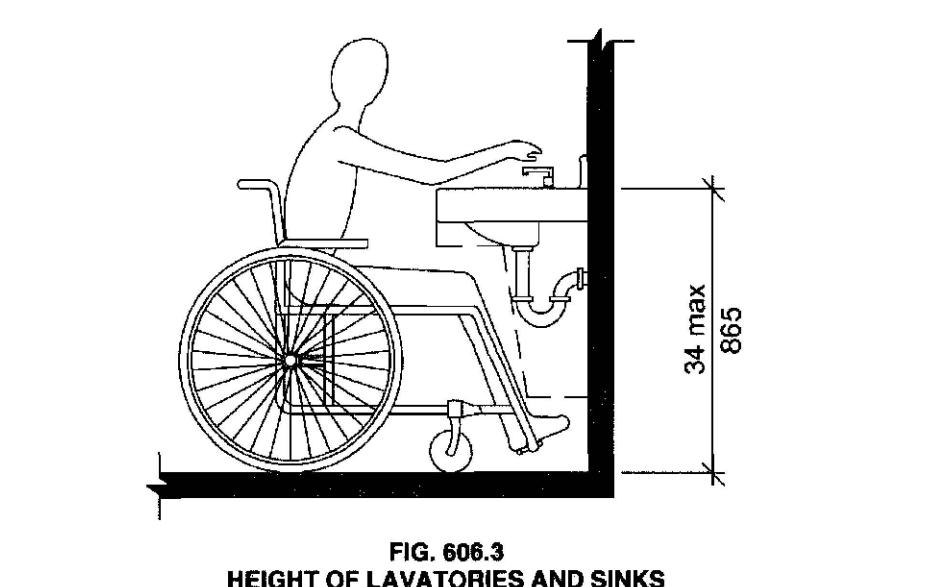


FIG. 605.2
HEIGHT OF URINALS

605.3 Clear Floor Space.
A clear floor space complying with Section 305, positioned for forward approach, shall be provided.
605.4 Flush Controls.
Flush controls shall be hand operated or automatic. Hand operated flush controls shall comply with Section 309.

606 LAVATORIES AND SINKS

606.1 General.
Accessible lavatories and sinks shall comply with Section 606.
606.2 Clear Floor Space.
A clear floor space complying with Section 305.3, positioned for forward approach, shall be provided. Knee and toe clearance complying with Section 306 shall be provided. The dip of the overflow shall not be considered in determining knee and toe clearances.
EXCEPTIONS:
1. A parallel approach complying with Section 305 and centered on the sink, shall be permitted to a kitchen sink in a space where a cook top or conventional range is not provided.
2. The requirement for knee and toe clearance shall not apply to a lavatory in a toilet or bathing facility for a single occupant, accessed only through a private office and not for common use or public use.
3. A knee clearance of 24 inches (610 mm) minimum above the floor shall be permitted at lavatories and sinks used primarily by children ages 6 through 12 where the rim or counter surface is 31 inches (785 mm) maximum above the floor.
4. A parallel approach complying with Section 305 and centered on the sink, shall be permitted at lavatories and sinks used primarily by children ages 5 and younger.
5. The requirement for knee and toe clearance shall not apply to more than one bowl of a multi-bowl sink.
6. A parallel approach complying with Section 305 and centered on the sink, shall be permitted at wet bars.
606.3 Height.
The front of lavatories and sinks shall be 34 inches (865 mm) maximum above the floor, measured to the higher of the rim or counter surface.
EXCEPTION: A lavatory in a toilet or bathing facility for a single occupant, accessed only through a private office and not for common use or public use, shall not be required to comply with Section 606.3.
606.4 Faucets.
Faucets shall comply with Section 309. Hand-operated metering faucets shall remain open for 10 seconds minimum.
606.5 Lavatories with Enhanced Reach Range.
Where enhanced reach range is required at lavatories, faucets and soap dispenser controls shall have a reach depth of 11 inches (280 mm) maximum, or, if automatic, shall be activated within a reach depth of 11 inches (280 mm) maximum. Water and soap flow shall be provided with a reach depth of 11 inches (280 mm) maximum.
606.6 Exposed Pipes and Surfaces.
Water supply and drainpipes under lavatories and sinks shall be insulated or otherwise configured to protect against contact. There shall be no sharp or abrasive surfaces under lavatories and sinks.



608 SHOWERS

608.1 General.
Accessible shower compartments shall comply with Section 608.
608.2 Size, clearance and seat.
Shower compartments shall have sizes, clearances and seats complying with Section 608.2.
608.2.1 Transfer-type Shower Compartments.
Transfer-type shower compartments shall comply with Section 608.2.1.

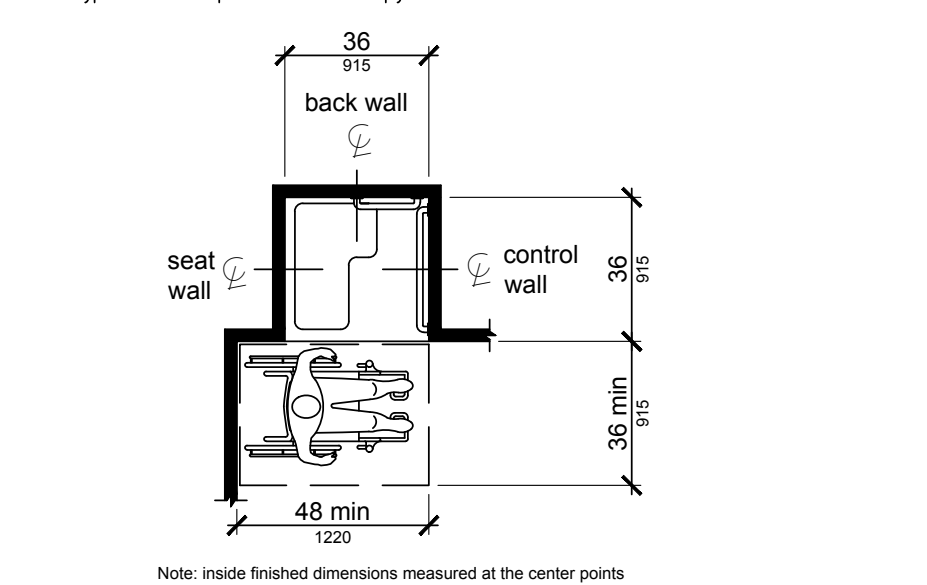


Figure 608.2.1 Transfer Type Shower Compartment Size and Clearance

608 SHOWERS CONT.

608.2.1 Size.
Transfer-type shower compartments shall have a clear inside dimension of 36 inches (915 mm) in width and 36 inches (915 mm) in depth, measured at the center point of opposing sides. An entry 36 inches (915 mm) minimum in width shall be provided adjacent to the open face of the compartment.
608.2.1.2 Clearance.
A clearance of 48 inches (1220 mm) minimum in length measured perpendicular to the control wall, and 36 inches (915 mm) minimum in depth shall be provided adjacent to the open face of the compartment.
608.2.1.3 Seat.
A folding or non-folding seat complying with Section 610 shall be provided on the wall opposite the control wall.
EXCEPTION: A seat is not required to be installed in a shower for a single occupant, accessed only through a private office and not for common use or public use, provided reinforcement has been installed in walls and located so as to permit the installation of a shower seat.

608.2.2 Standard Roll-in-type Shower Compartments.
Standard roll-in-type shower compartments shall comply with Section 608.2.2.
608.2.2.1 Size.
Standard roll-in-type shower compartments shall have a clear inside dimension of 60 inches (1525 mm) minimum in width and 30 inches (760 mm) minimum in depth, measured at the center point of opposing sides. An entry 60 inches (1525 mm) minimum in width shall be provided.
608.2.2.2 Clearance.
A clearance of 60 inches (1525 mm) minimum in length adjacent to the 60-inch (1525 mm) width of the open face of the shower compartment, and 30 inches (760 mm) minimum in depth, shall be provided.
EXCEPTION: A lavatory complying with Section 606 shall be permitted at the end of the clearance opposite the seat.
608.2.2.3 Seat.
A folding seat complying with Section 610 shall be provided on an end wall.
EXCEPTIONS:
1. A seat is not required to be installed in a shower for a single occupant, accessed only through a private office and not for common use or public use, provided reinforcement has been installed in walls and located so as to permit the installation of a shower seat.
2. A fixed seat shall be permitted where the seat does not overlap the minimum clear inside dimension required by Section 608.2.2.1.

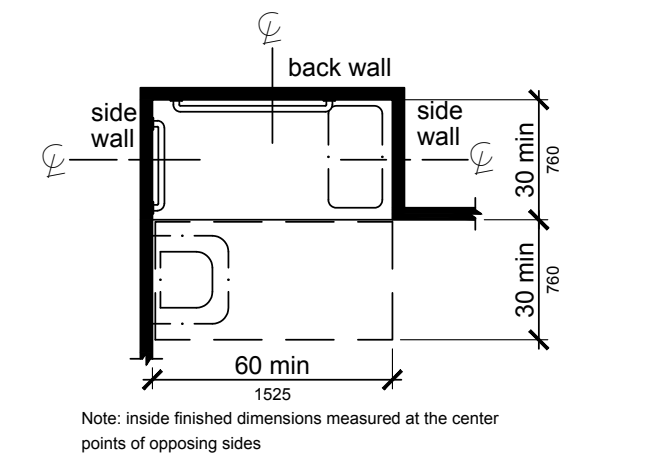


Figure 608.2.2 Standard Roll-In Type Shower Compartment Size and Clearance

608.2.3 Alternate Roll-in-type Shower Compartments.
Alternate roll-in-type shower compartments shall comply with Section 608.2.3.
608.2.3.1 Size.
Alternate roll-in-type shower compartments shall have a clear inside dimension of 60 inches (1525 mm) minimum in width, and 36 inches (915 mm) in depth, measured at the center point of opposing sides. An entry 36 inches (915 mm) minimum in width shall be provided at one end of the 60-inch (1525 mm) width of the compartment. A seat wall, 24 inches (610 mm) minimum and 36 inches (915 mm) maximum in length, shall be provided on the entry side of the compartment.
608.2.3.2 Seat.
A folding seat complying with Section 610 shall be provided on the seat wall opposite the back wall.
EXCEPTION: A seat is not required to be installed in a shower for a single occupant, accessed only through a private office and not for common use or public use, provided reinforcement has been installed in walls and located so as to permit the installation of a shower seat.

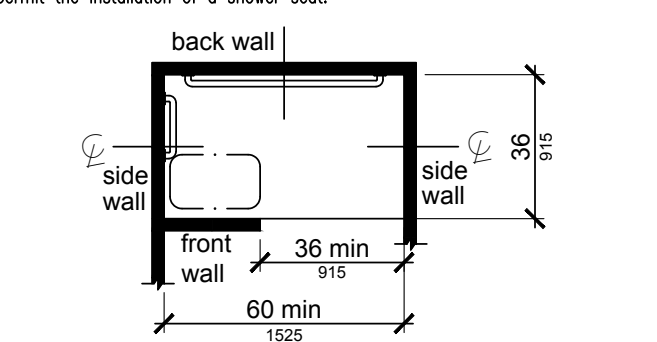


Figure 608.2.3 Alternate Roll-In Type Shower Compartment Size and Clearance

608.3 Grab Bars.
Grab bars shall comply with Section 609 and shall be provided in accordance with Section 608.3. Where multiple grab bars are used, required horizontal grab bars shall be installed at the same height above the floor.
EXCEPTION: Grab bars are not required to be installed in a shower for a single occupant, accessed only through a private office and not for common use or public use, provided reinforcement has been installed in walls and located so as to permit the installation of grab bars complying with Section 608.3.
608.3.1 Transfer-type Showers.
Grab bars for transfer type showers shall comply with Section 608.3.1.
608.3.1.1 Horizontal Grab Bars.
Horizontal grab bars shall be provided across the control wall and on the back to a point 18 inches (455 mm) from the control wall.
608.3.1.2 Vertical Grab Bar.
A vertical grab bar 18 inches (455 mm) minimum in length shall be provided on the control wall and 3 inches (75 mm) minimum and 6 inches (150 mm) maximum above the horizontal grab bar, and 4 inches (100 mm) maximum from the front edge of the shower.

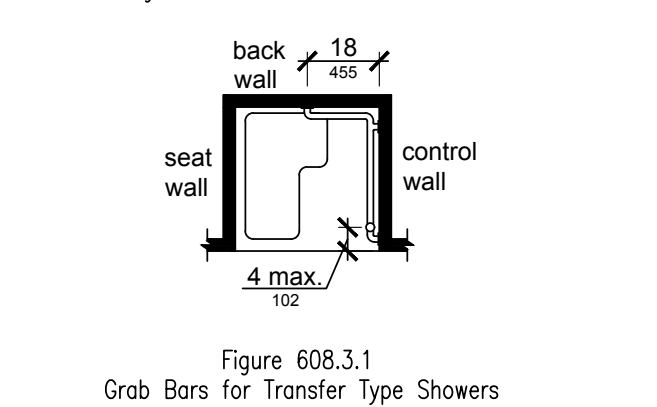


Figure 608.3.1 Grab Bars for Transfer Type Showers

608.3.2 Standard Roll-in-type Showers.
In standard roll-in-type showers, a grab bar shall be provided on the back wall beginning at the edge of the seat. The grab bars shall not be provided above the seat. The back wall grab bar shall extend the length of the wall but shall not be required to exceed 48 inches (1220 mm) in length. Where a side wall is provided opposite the seat within 72 inches (1830 mm) of the seat wall, a grab bar shall be provided on the side wall opposite the seat. The side wall grab bar shall extend the length of the wall but shall not be required to exceed 30 inches (760 mm) length. Grab bars shall be 6 inches (150 mm) maximum from the adjacent wall.



Figure 608.3.2 Grab Bars in Standard Roll-In Type Showers

TED TROUT
ARCHITECT
AND ASSOCIATES, LTD.
Architecture • Planning • Interior Design
11111 Katy Freeway Suite 625
Houston, Texas 77075



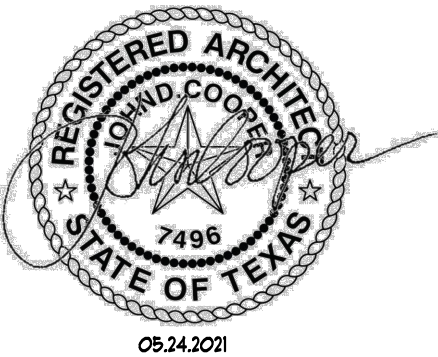
CLIENT NAME
CALIBER INVESTMENT CORP.
P.O. BOX 6153
HUNTSVILLE, TEXAS 77342

PROJECT NAME
THE WEST HILL CENTER MALL

PROJECT LOCATION
**149 COL. ETHERIDGE BLVD.
HUNTSVILLE, TEXAS 77340**

DATE	ISSUE
10.20.2020	PRELIMINARY
03.05.2021	PERMIT

DATE	03.05.2021
SCALE	A5 NOTED
PROJECT NUMBER	2023
DRAWN BY	DAA
SHEET TITLE	TEXAS ACCESSIBILITY STANDARDS
SHEET NUMBER	



CLIENT NAME

CALIBER INVESTMENT CORP.

P.O. BOX 6153
HUNTSVILLE, TEXAS 77342

PROJECT NAME

THE WEST HILL
CENTER MALL

PROJECT LOCATION

149 COL. ETHERIDGE BLVD.
HUNTSVILLE, TEXAS 77340

DATE	ISSUE
10.20.2020	PRELIMINARY
03.05.2021	PERMIT
05.24.2021	PERMIT COMMENTS

DATE 05.24.2021

SCALE 1/8" = 1'-0"

PROJECT NUMBER 2023

DRAWN BY GGF

SHEET TITLE
BUILDING
FLOOR PLAN

SHEET NUMBER

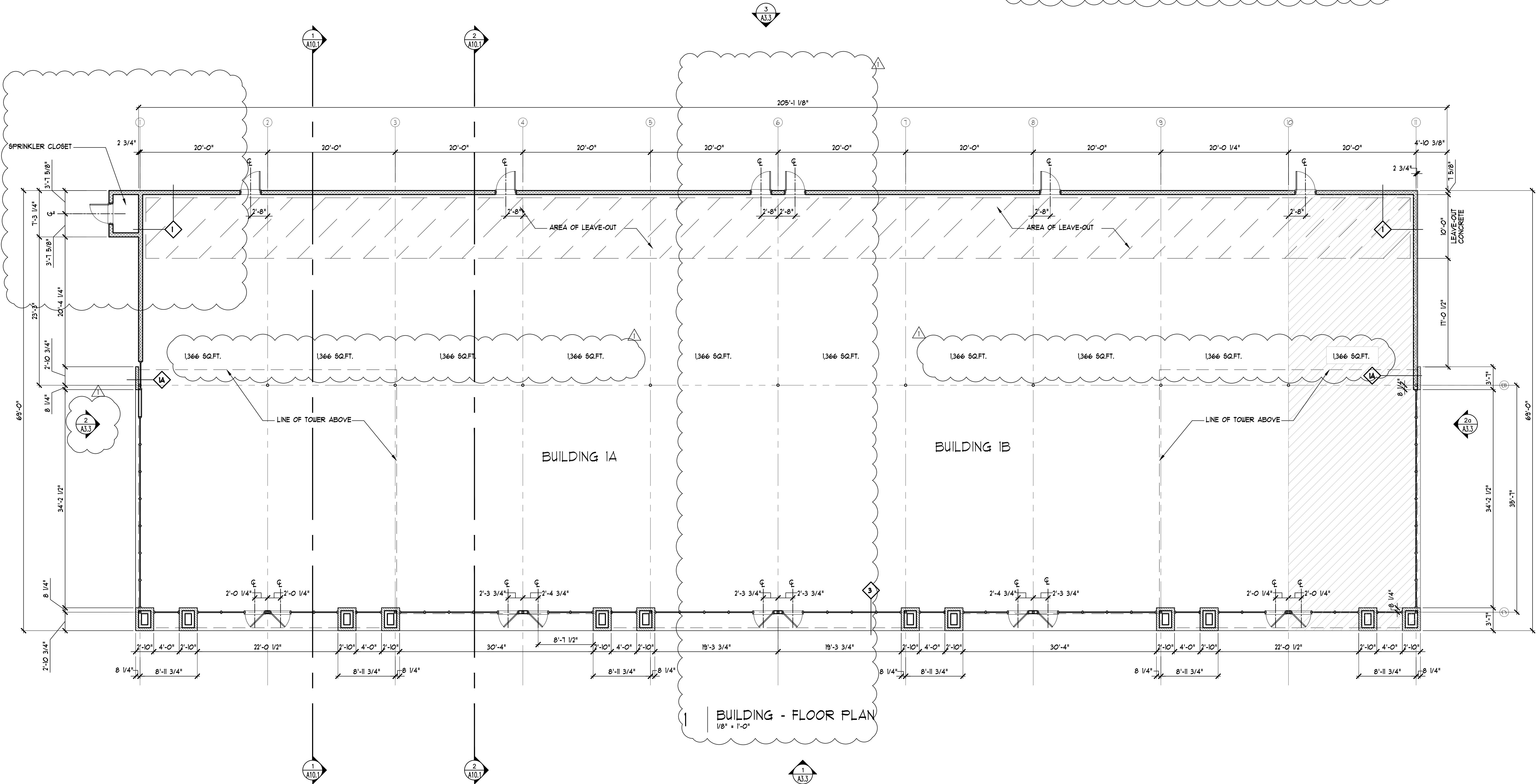
A3.1

FIRE PROTECTION NOTES

1. FIRE SPRINKLER TO BE DIFFERED SUBMITTAL.
2. BUILDING TO BE FULLY EQUIPPED THROUGHOUT WITH NFPA-13 FIRE SPRINKLER SYSTEM.

TOTAL BUILDING AREA = 13,366 SQ.FT.

NET RENTABLE LEASES = 10 @ 1,366 SQ.FT.



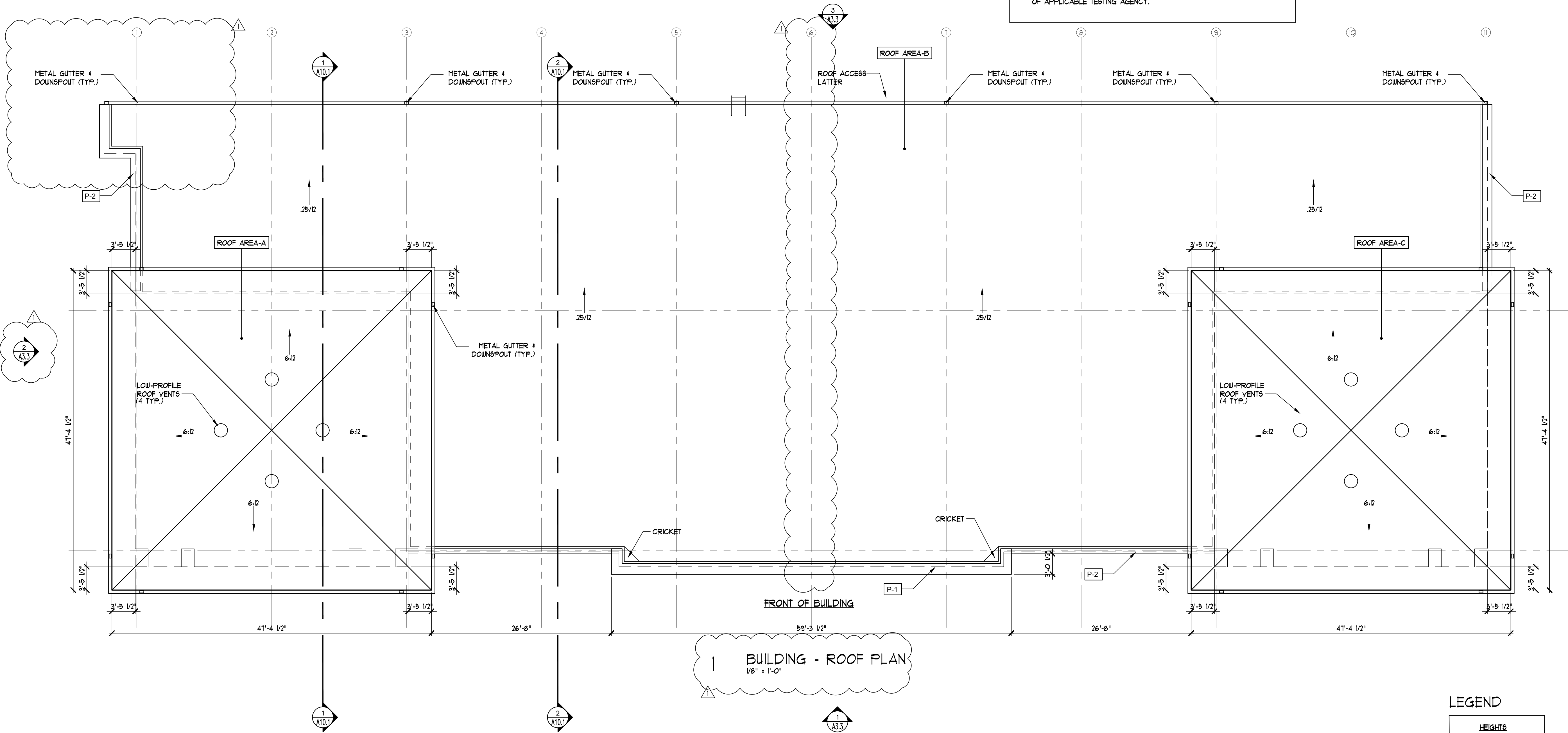
ATTIC VENTILATION CALCULATIONS-AREAS A & C	
AREA OF ATTIC IN SQ. FT.:	2244 SQ. FT.
ATTIC AREA DIVIDED BY 150:	148 SQ. FT. 1071 SQ. IN.
ROOF VENTILATION REQUIRED: (50% OF ROOF AREA)	539 SQ. IN.
PROVIDED: STATIC, LOW PROFILE ROOF VENTS, W/ NET FREE AREA = 144 SQ. IN. 4 AT 144 SQ. IN. EA:	576 SQ. IN.
UNDER-EAVES VENTILATION REQUIRED: (50% OF ROOF AREA)	539 SQ. IN.
PROVIDED: CONTINUOUS 3" OFFSET VENT W/ NET FREE AREA = 15 SQ. IN. / LIN. FT. 36 LIN. FT. AT 15 SQ. IN. / LIN. FT.:	540 SQ. IN.

TPO ROOFING REQUIREMENTS
A. GENERAL PERFORMANCE: INSTALLED ROOFING AND BASE FLASHINGS SHALL WITHSTAND SPECIFIED UPLIFT PRESSURES, THERMALLY INDUCED MOVEMENT, AND EXPOSURE TO WEATHER WITHOUT FAILURE DUE TO DEFECTIVE MANUFACTURE, FABRICATION, INSTALLATION, OR OTHER DEFECTS IN CONSTRUCTION. ROOFING AND BASE FLASHINGS SHALL REMAIN WATERTIGHT. 1. ACCELERATED WEATHERING: ROOFING SYSTEM SHALL WITHSTAND 2000 HOURS OF EXPOSURE WHEN TESTED ACCORDING TO ASTM G 152, ASTM G 154, OR ASTM G 155. 2. IMPACT RESISTANCE: ROOFING SYSTEM SHALL RESIST IMPACT DAMAGE WHEN TESTED ACCORDING TO ASTM D 3746 OR ASTM D 4712. B. MATERIAL COMPATIBILITY: ROOFING MATERIALS SHALL BE COMPATIBLE WITH ONE ANOTHER AND ADJACENT MATERIALS UNDER CONDITIONS OF SERVICE AND APPLICATION REQUIRED, AS DEMONSTRATED BY ROOFING MANUFACTURER BASED ON TESTING AND FIELD EXPERIENCE. C. ROOFING SYSTEM DESIGN: TESTED BY A QUALIFIED TESTING AGENCY TO RESIST THE UPLIFT PRESSURES DETERMINED ACCORDING TO ASCE/SEI 1 USING WIND SPEED CRITERIA INDICATED ON STRUCTURAL DRAWINGS. D. ENERGY PERFORMANCE: ROOFING SYSTEM SHALL HAVE AN INITIAL SOLAR REFLECTANCE OF NOT LESS THAN 0.10 AND AN EMISSIVITY OF NOT LESS THAN 0.15 WHEN TESTED ACCORDING TO CRRC-1. E. EXTERIOR FIRE-TEST EXPOSURE: ASTM E 108 OR UL 790, CLASS A, FOR APPLICATION AND ROOF SLOPES INDICATED. TESTING BY A QUALIFIED TESTING AGENCY. IDENTIFY PRODUCTS WITH APPROPRIATE MARKINGS OF APPLICABLE TESTING AGENCY.

FABRICATE & INSTALL SHEET METAL WORK IN ACCORDANCE W/ SHEET METAL & AIR CONDITIONING CONTRACTOR'S NATIONAL ASSOCIATION, INC. (SMACNA) "ARCHITECTURAL SHEET METAL MANUAL," LATEST EDITION. FABRICATE & INSTALL FLASHINGS AT EDGES OF ROOF IN ACCORDANCE W/ FM LOSS PREVENTION DATA SHEET 1 - 49 FOR SPECIFIED WIND ZONE. ENSURE THAT SUBSTRATE CONSTRUCTION IS ALSO IN COMPLIANCE.

LOWER ROOF CONSTRUCTION:
STEEL DECK COVERED MIN. R-25 C.I.
FOAM INSULATION BOARDS W/ COVER BOARD.
TPO MEMBRANE ROOFING TO BE APPLIED TO COVER BOARD PER MANUFACTURER'S INSTRUCTIONS.

UPPER ROOF CONSTRUCTION:
STANDING SEAM METAL ROOF OVER
OVER 1 LAYER OF 15 LB. FELT
OVER 19/32" O.S.B. DECKING



LEGEND

	HEIGHTS
P-1	T. O. PARAPET AT EL. 52'-3 1/2"
P-2	T. O. PARAPET AT EL. 48'-1 1/2"



CLIENT NAME
CALIBER INVESTMENT CORP.
P.O. BOX 6153
HUNTSVILLE, TEXAS 77342


PROJECT NAME
THE WEST HILL
CENTER MALL

PROJECT LOCATION
149 COL. ETHERIDGE BLVD.
HUNTSVILLE, TEXAS 77340

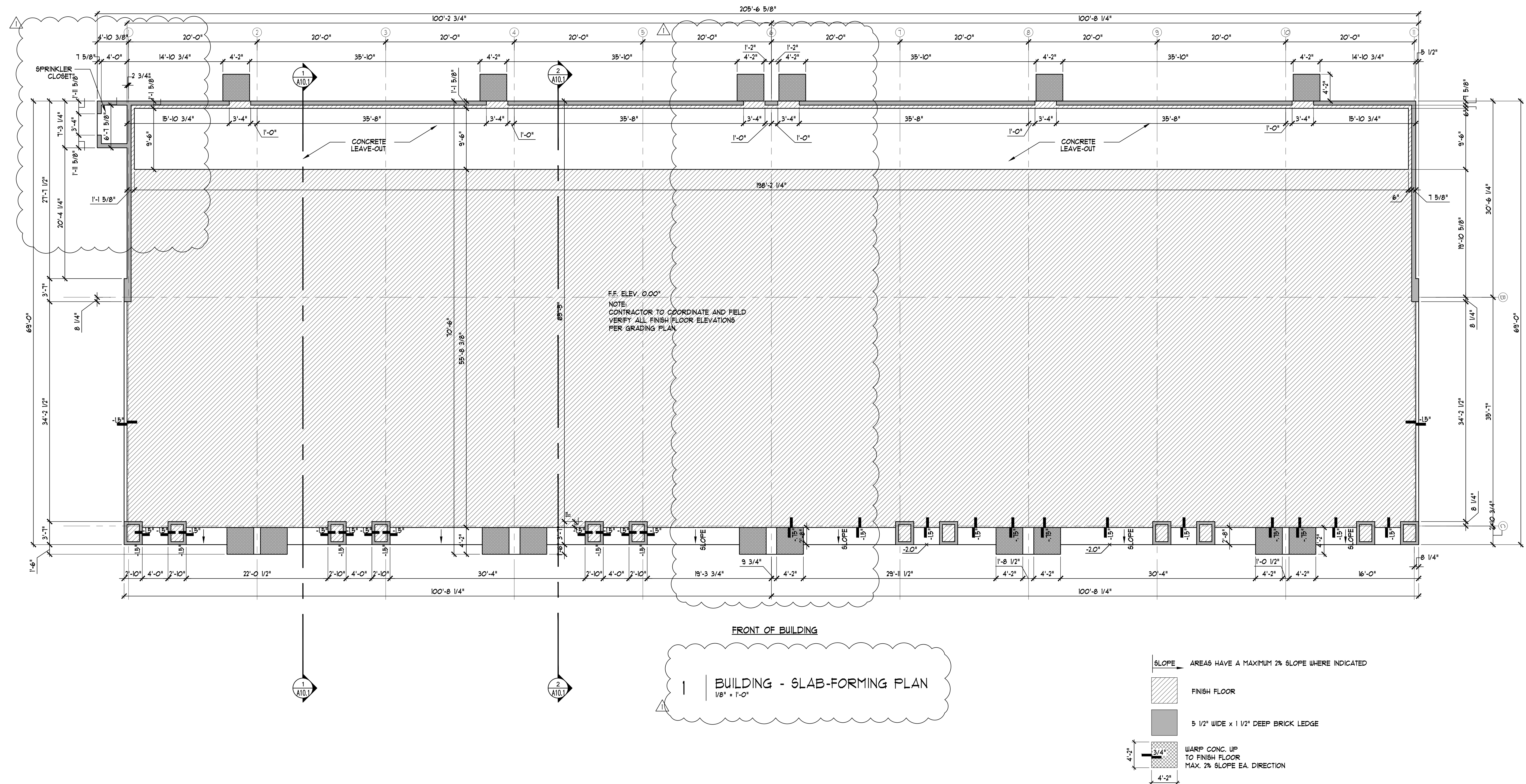
DATE	ISSUE
10.20.2020	PRELIMINARY
03.05.2021	PERMIT
05.24.2021	PERMIT COMMENTS

DATE	05.24.2021
SCALE	1/8" = 1'-0"
PROJECT NUMBER	2023
DRAWN BY	GGF
SHEET TITLE	BUILDING ROOF PLAN
SHEET NUMBER	A3.1a

PROJECT LOCATION:
149 COL. ETHERIDGE BLVD.
HUNTSVILLE, TEXAS 77340

DATE	05.24.2021
SCALE	1/8" = 1'-0"
PROJECT NUMBER	2023
DRAWN BY	GGF
SHEET TITLE	 BUILDING SLAB-FORMING PLAN
SHEET NUMBER	

A3.1b





05.24.2021

149 COL. ETHERIDGE BLVD.
HUNTSVILLE, TEXAS 77340

DATE	ISSUE
10.20.2020	PRELIMINARY
03.05.2021	PERMIT
05.24.2021	PERMIT COMMENTS

DATE	05.24.2021
------	------------

SCALE $1/8" = 1'-0"$

PROJECT NUMBER	2023
----------------	------

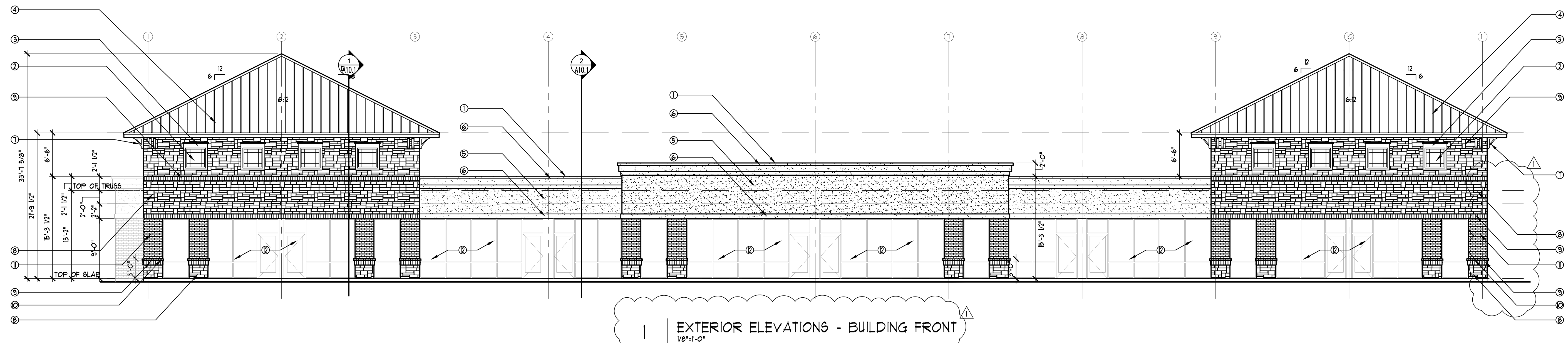
DRAWN BY GGF

SHEET TITLE

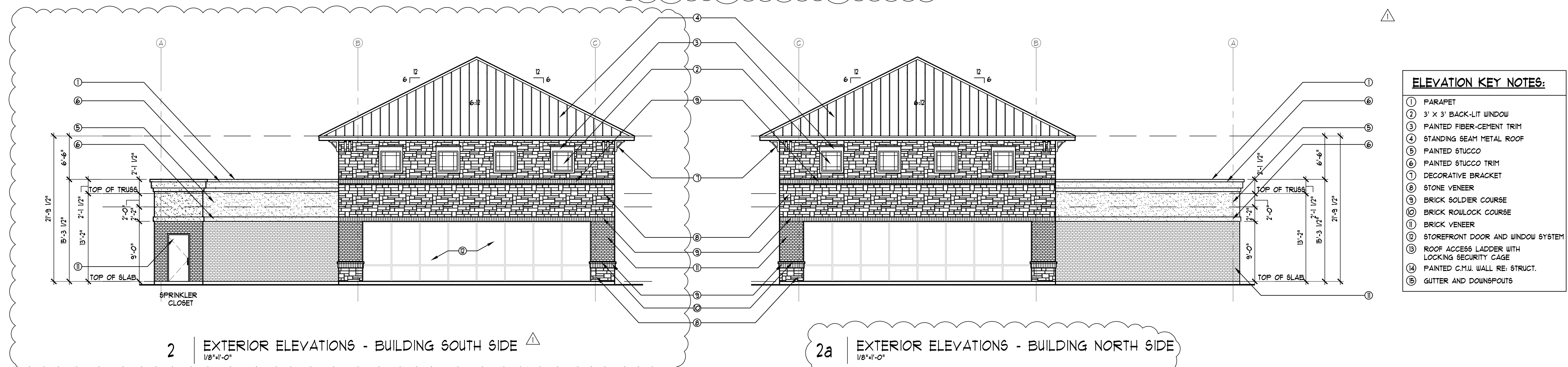
BUILDING EXTERIOR ELEVATIONS

SHEET NUMBER

A3.3

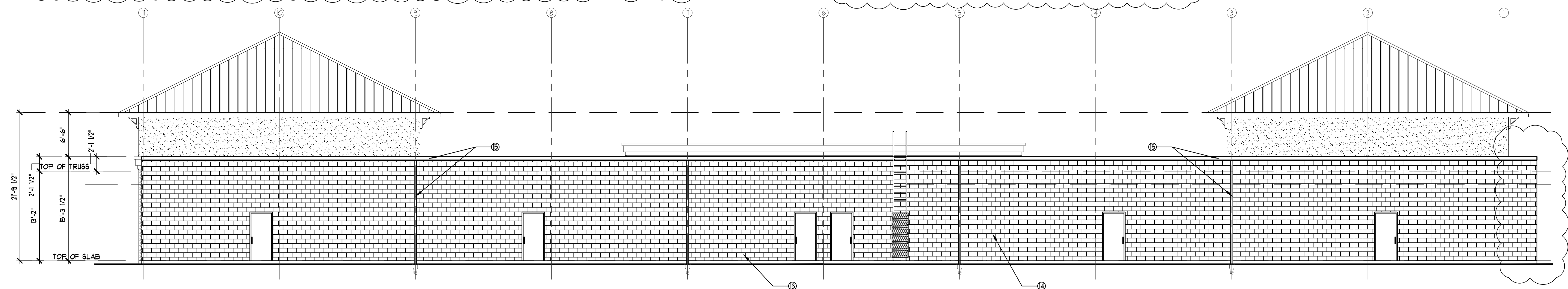


1 | EXTERIOR ELEVATIONS - BUILDING FRONT
1/8" = 1'-0"



2 | EXTERIOR ELEVATIONS - BUILDING SOUTH SIDE
1/8"=1'-0"

2a EXTERIOR ELEVATIONS - BUILDING NORTH SIDE
1/8"=1'-0"



3 | EXTERIOR ELEVATIONS - BUILDING REAR
1/8"=1'-0"



CLIENT NAME

CALIBER INVESTMENT CORP.

P.O. BOX 6153
HUNTSVILLE, TEXAS 77342

PROJECT NAME

THE WEST HILL
CENTER MALL

PROJECT LOCATION:

149 COL. ETHERIDGE BLVD.
HUNTSVILLE, TEXAS 77340

DATE	ISSUE
10.20.2020	PRELIMINARY
03.05.2021	PERMIT

DATE 03.05.2021

SCALE 1/8" = 1'-0"

PROJECT NUMBER 2023

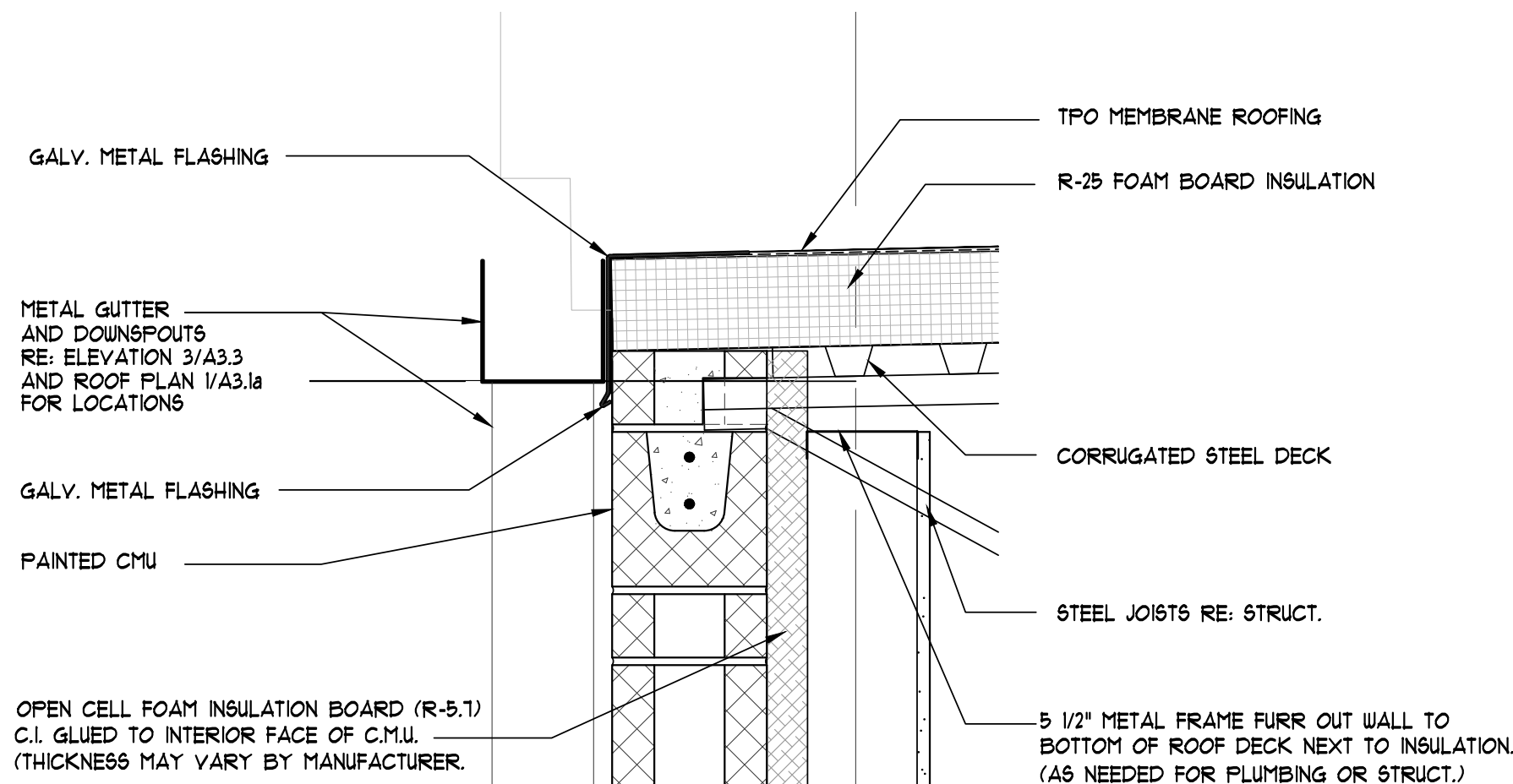
DRAWN BY GGF

SHEET TITLE

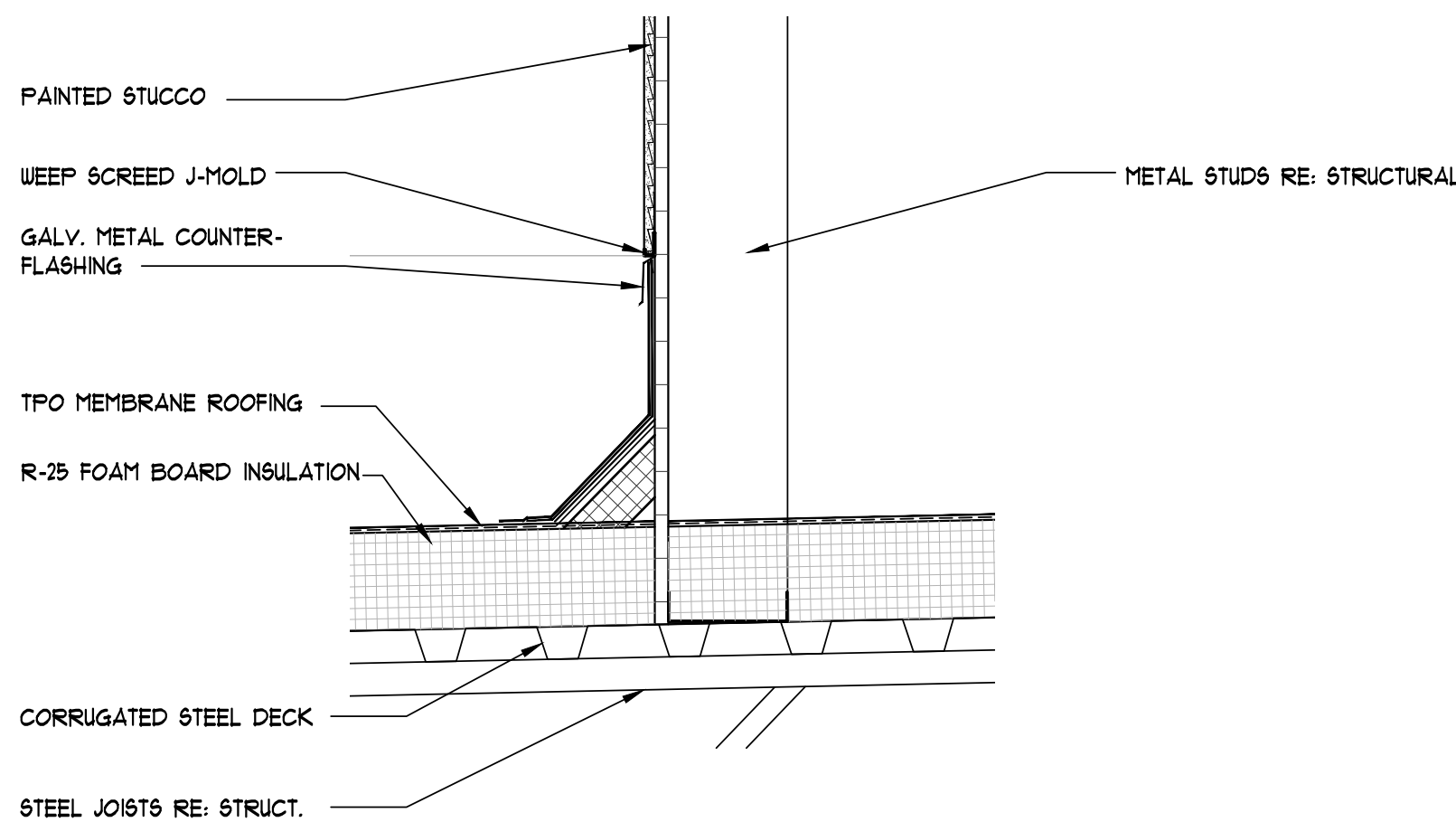
BUILDING SECTION
DETAILS

SHEET NUMBER

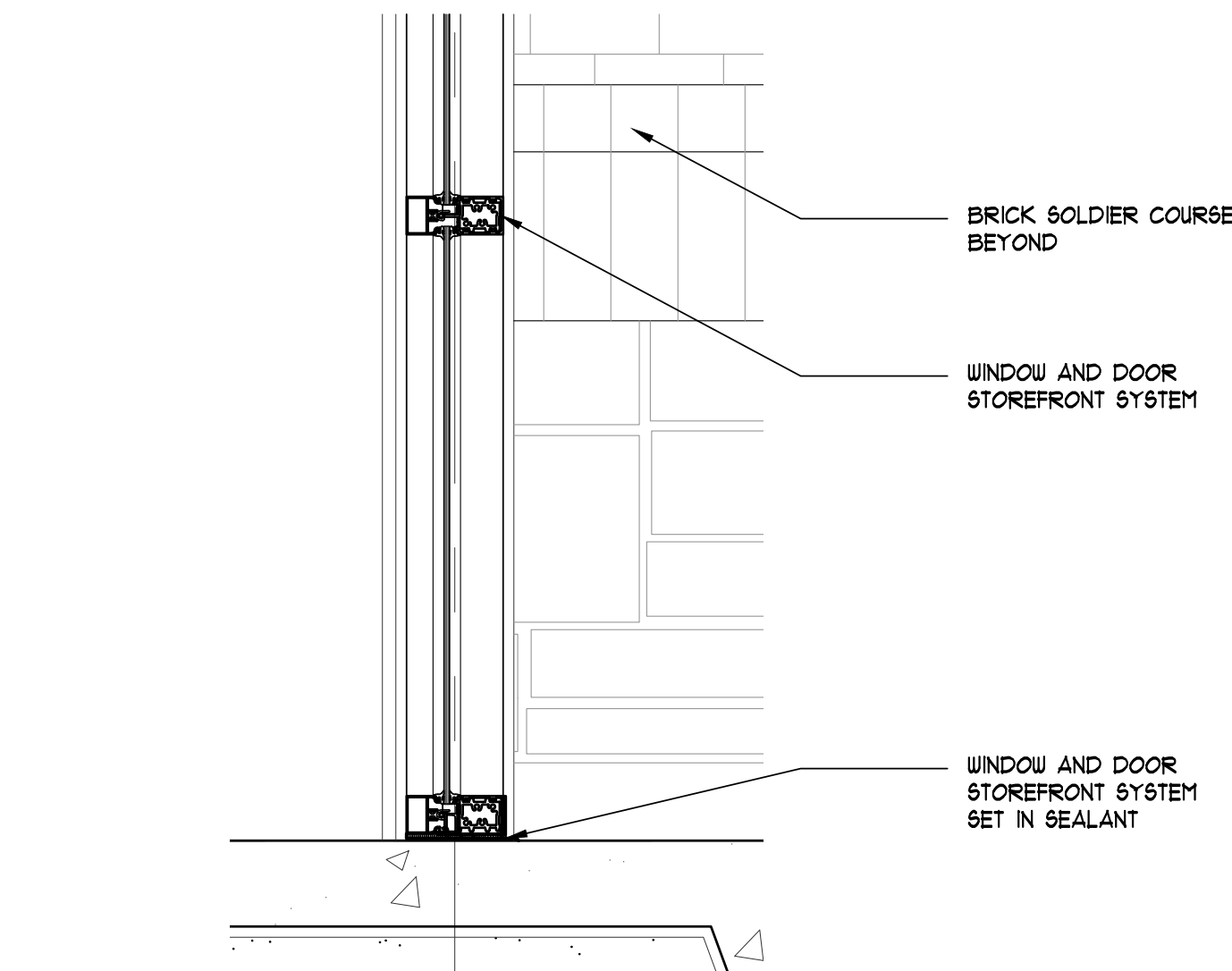
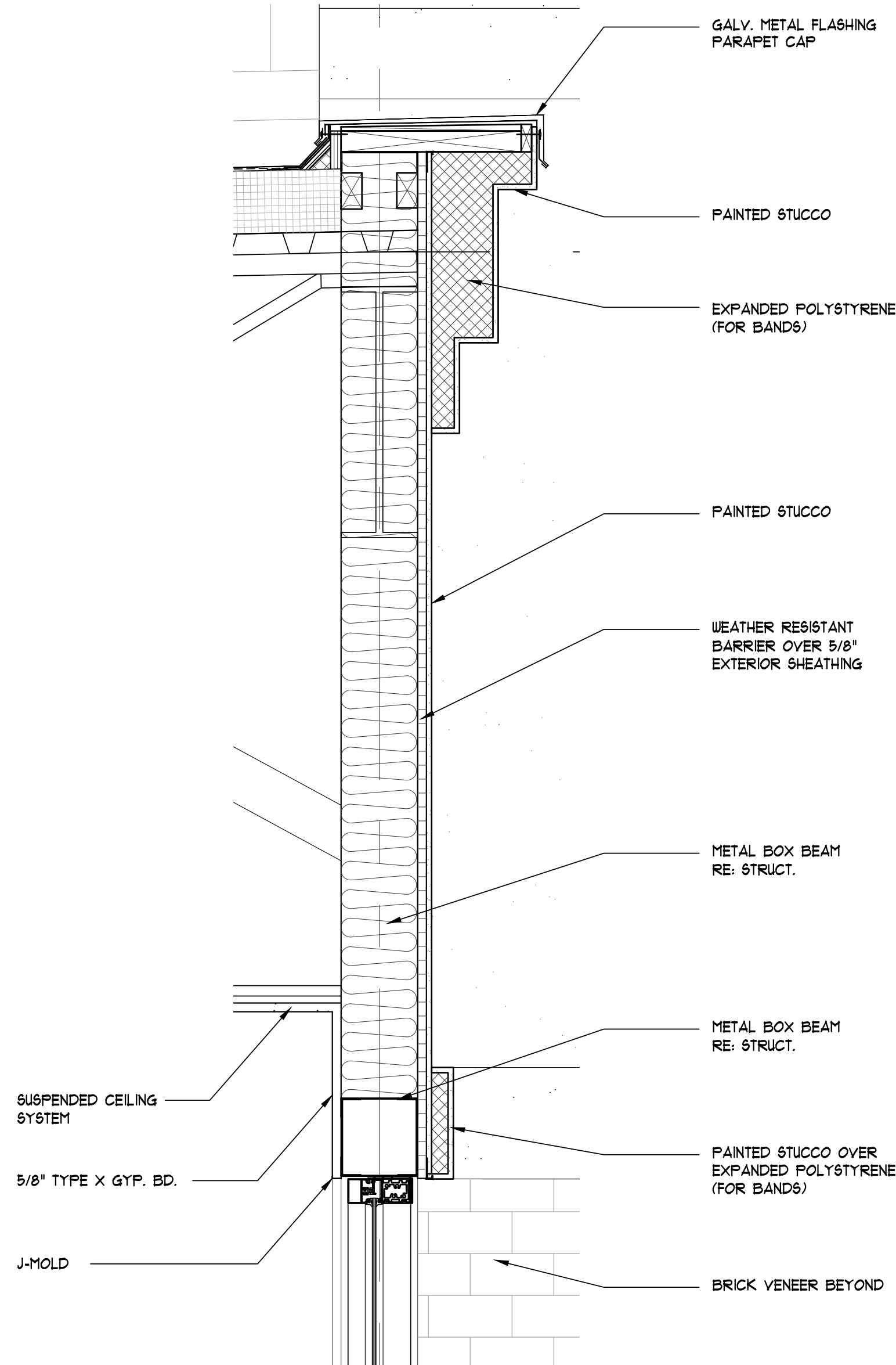
A10.1a



3 BUILDING SECTION DETAIL AT CMU WALL AND ROOF
1/4"=1'-0"



1 BUILDING SECTION DETAIL AT TOWER WALL AND ROOF
1/4"=1'-0"



2 WALL SECTION DETAIL AT LOWER PARAPET
1/4"=1'-0"